



Ena Road, SW16
£650,000

Dexters



Ena Road, SW16

This beautifully presented three-bedroom terraced home offers stylish, modern living on a quiet residential road. Finished to a high standard throughout,

The property features a contemporary kitchen and a sleek, modern bathroom, making it ideal for buyers seeking a home they can move straight into. The accommodation is well balanced, with bright and inviting living spaces and three well-proportioned bedrooms. To the rear, the property boasts a sizable south-facing garden, perfect for outdoor entertaining, gardening, or simply enjoying the sunshine throughout the day.

Ideally located in a peaceful setting while remaining conveniently close to local amenities, schools, and transport links, this charming home combines comfort, style, and practicality in an excellent location.

Features

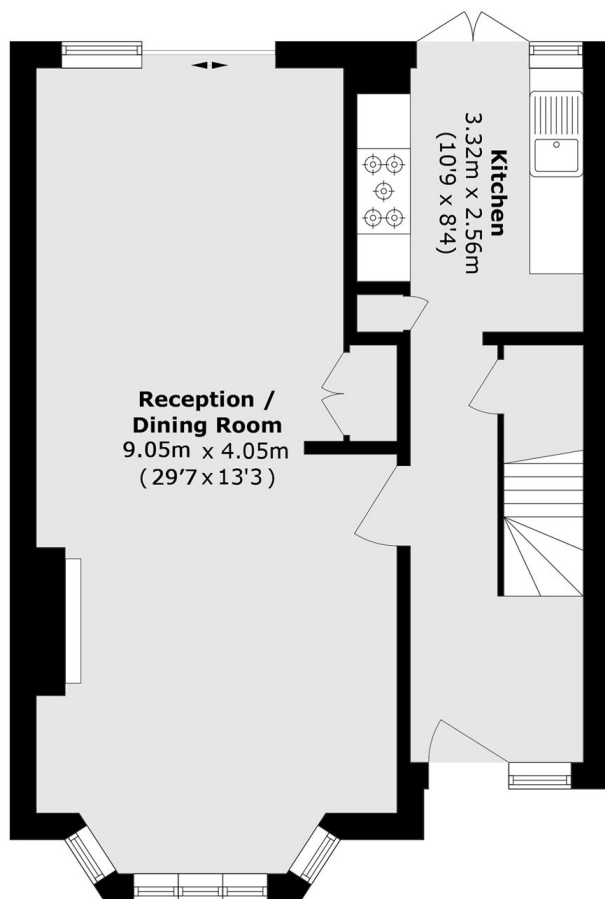
- Excellent condition
- Three bedrooms
- South facing garden
- Convenient location
- 1134 sq ft
- EPC C



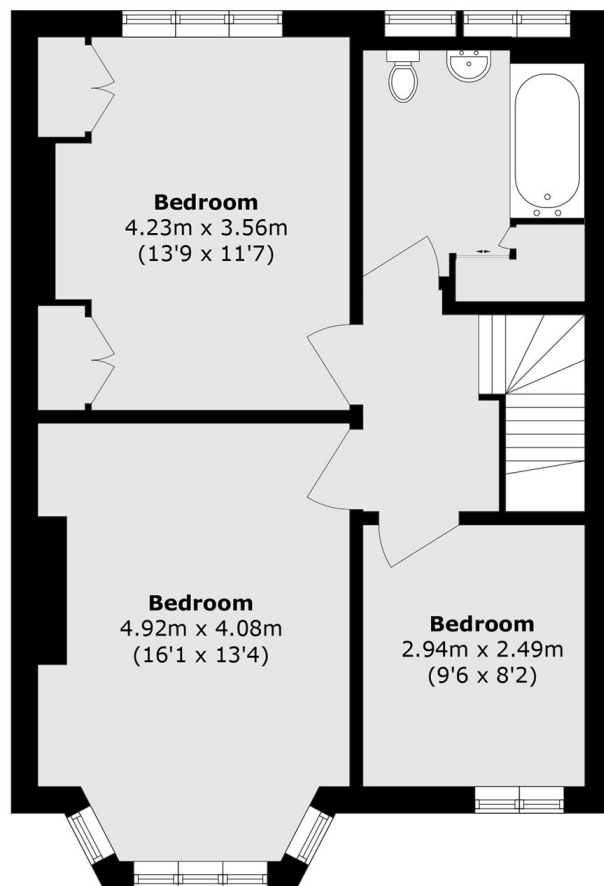




Ena Road,
London, SW16



Ground Floor



First Floor

Total area (approx.): 105.4 sq. m (1134.5 sq. ft)