



Maplethorpe Road, CR7 £500,000

A beautifully presented, three double bedroom period home enjoying an extended modern kitchen with large glass sliding doors leading to the garden.

Maplethorpe Road is conveniently situated just 0.7 Miles from Thornton Heath train station and the town centre, which offers a variety of local restaurants and shops. The property also benefits from easy access to local schools, including state and grammar schools, making it an ideal location for families.

Features

- End of terrace
- Three double bedrooms
- Extended kitchen
- 1066 sq ft
- Period features
- EPC: D



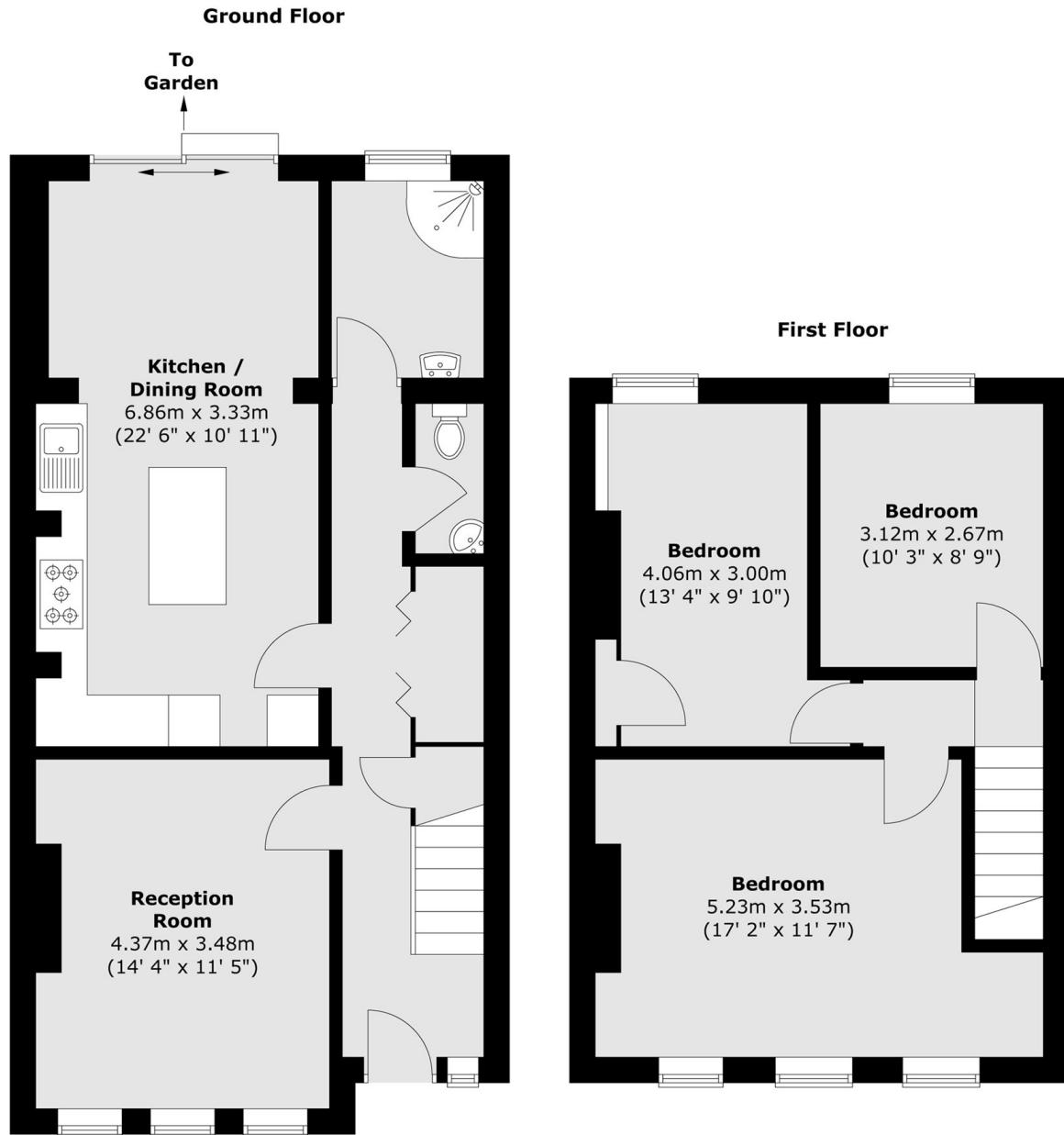
Maplethorpe Road, CR7

The accommodation comprises an entrance hall leading to a front reception room with a period fireplace. The updated and extended kitchen/dining room opens onto the rear garden, and there is also a family bathroom on the ground floor.

On the first floor, there are three double bedrooms. Externally, the property is set back from the road and benefits from side access to the rear.



Maplethorpe Road, Thornton Heath, CR7



Total area (approx.) : 99 sq. m (1066 sq. ft)