



Goston Gardens, CR7

£695,000

A spacious, 1,600 sq ft, double-fronted five-bedroom family home. The property offers flexible accommodation and benefits from a garage as well as off-street parking

Goston Gardens is a sought after road located between Norbury and Thornton Heath. The nearest mainline station is located at Thornton Heath just 0.7 Miles and Norbury 1 mile both providing rail links to London Bridge and Victoria. Good schools are nearby, as are the recreational facilities of Norbury Park and Streatham Common.

Features

- Five bedrooms
- Two bathrooms
- Integrated garage
- 1,600 sq ft
- 0.7 miles to station
- EPC: D



Goston Gardens, CR7

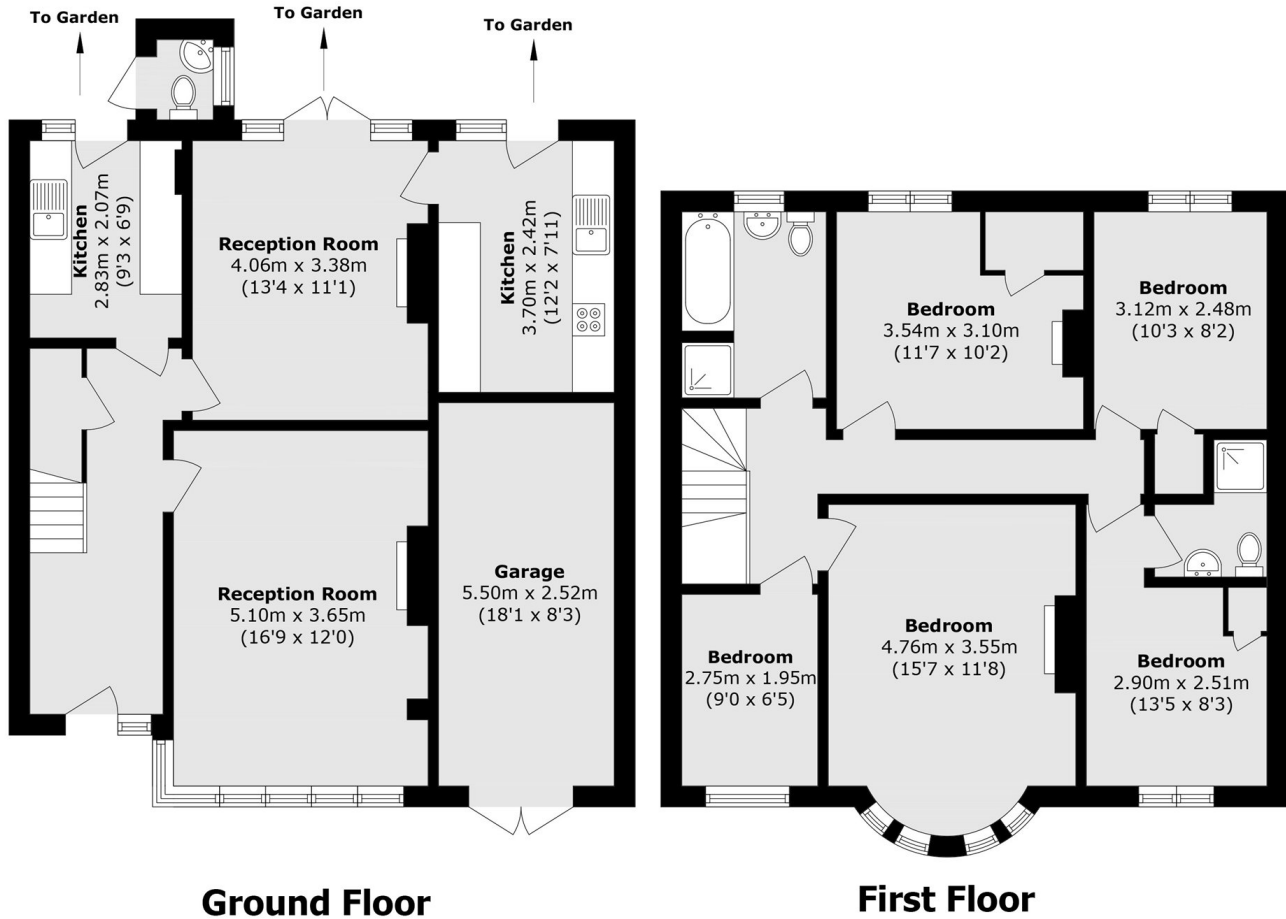
The accommodation comprises an entrance hall, a front reception room with a bay window, and a rear reception room overlooking the garden. There is also a kitchen and a separate utility room.

Upstairs, there are four double bedrooms one of which benefits from its own en-suite a single bedroom, and a family bathroom.

The property further benefits from an integrated garage, off-street parking, and a rear garden with w.c.



Goston Gardens, Thornton Heath, CR7



Total area (approx.): 132.0 sq. m (1420.8 sq. ft)
Garage area (approx.): 13.8 sq. m (148.5 sq. ft)
External WC area (approx.): 0.9 sq. m (9.6 sq. ft)