



Selwood Road, CR0  
£640,000

**Dexters**



## Selwood Road, CR0

A well-proportioned and naturally bright four-bedroom semi-detached family home, featuring its own driveway leading to a garage, along with a private garden.

The accommodation comprises a wide entrance hall leading to the front reception room with parquet flooring, a garden-aspect dining room, and a kitchen/breakfast room. On the first floor, there are three double bedrooms, a further single bedroom, and a family bathroom. Externally, the property benefits from a private driveway leading to gated side access, a garage, and a generously sized garden.

Selwood Road is well located on a popular residential road, close to local amenities and well-regarded schools. West Croydon railway station (approx. 0.9 miles) and East Croydon railway station (approx. 1.2 miles) provide excellent transport links into Central London and beyond. Nearby schools include Chestnut Park Primary School, Elmwood Infant School, and Ark Blake Academy, all within easy reach.

### Features

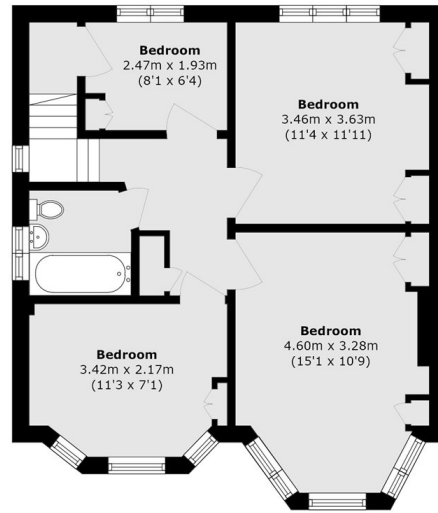
- Semi detached
- Four bedrooms
- Driveway and garage
- Family size garden
- Extension potential
- EPC: D



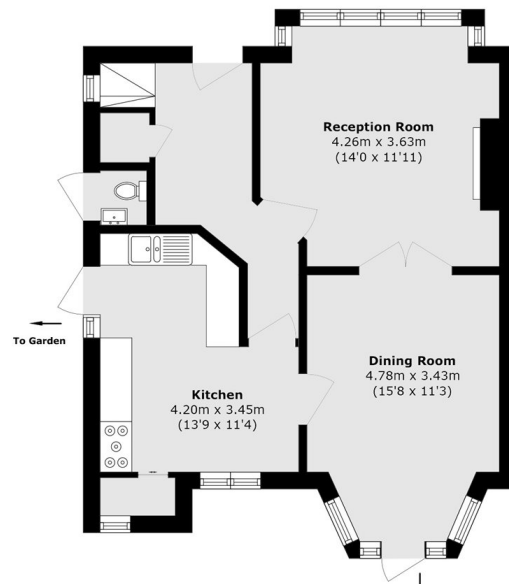




# Selwood Road, Croydon, CR0



**First Floor**



**Ground Floor**

Total area (approx.): 104.95 sq. m (1129.6 sq. ft)  
External W.C (approx.): 8.05 sq. m (86.6 sq. ft)