



St. Christophers Gardens, CR7

£200,000

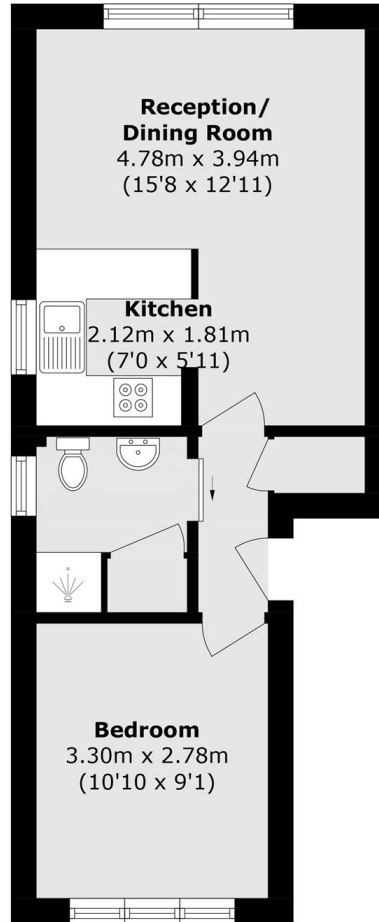
A well presented one bedroom ground floor apartment, with share of freehold and conveniently located for both Norbury and Thornton Heath station.

St, Christophers Gardens is a private development located between Norbury and Thornton Heath. The nearest mainline station is located at Thornton Heath just 0.7 Miles and Norbury 1 mile both providing rail links to London Bridge and Victoria. Good schools are nearby, as are the recreational facilities of Norbury Park and Streatham Common.

Features

Ground floor
One bedroom
Share of freehold
Private development
0.7 miles to station
EPC: D

St. Christophers Gardens, Thornton Heath, CR7



Ground Floor

Total area (approx.): 35.5 sq. m (382.1 sq. ft)