



## Melrose Avenue, SW16

£2,900 Per calendar month

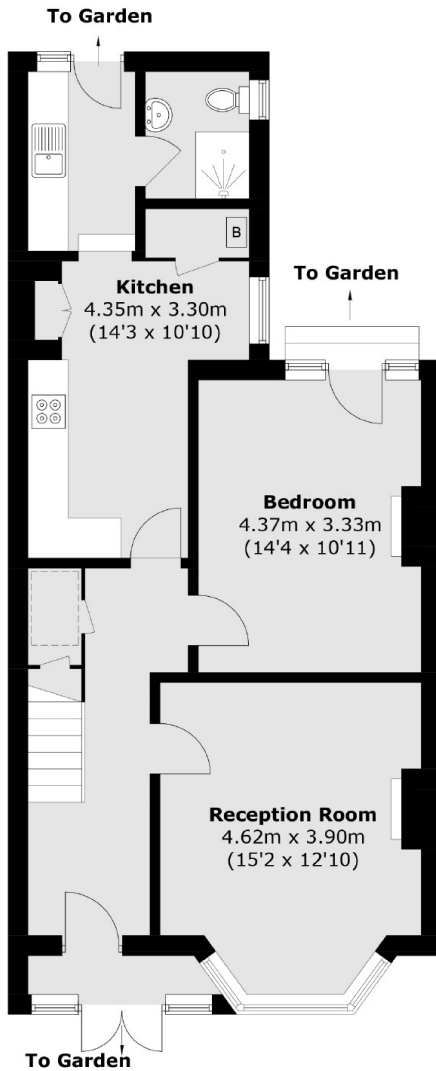
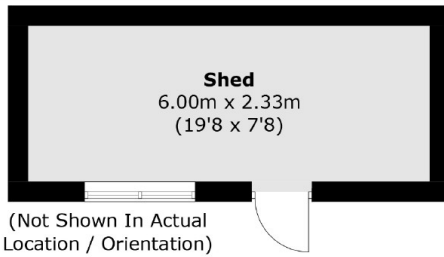
This four bedroom home has been finished to a modern, neutral standard. With a large private garden and off street parking, this is ideal for four professional sharers or a family that require access to schools and transport.

Melrose Avenue is ideally located off London Road, which provides a good range of shops and amenities, while Norbury Station is within walking distance.

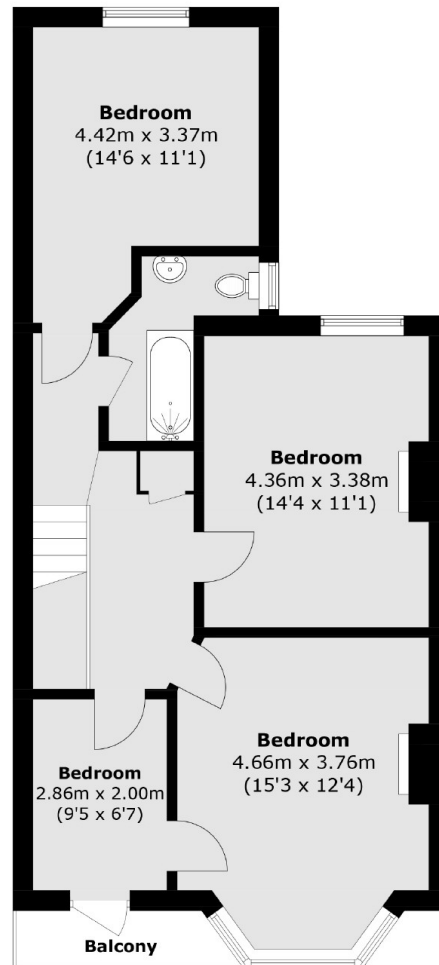
### Features

- Four Bedroom House
- Off Street Parking
- Large Garden
- Modern Kitchen
- Two Bathrooms
- Additional Balcony

# Melrose Avenue, London, SW16



## Ground Floor



## First Floor

Total area (approx.): 135.3 sq. m (1,456.4 sq. ft)

Shed: 14.1 sq. m (151.8 sq. ft)

Balcony: 2.5 sq. m (26.9 sq. ft)