



Briar Avenue, SW16
£1,000,000

Dexters



Briar Avenue, SW16

A spacious double-fronted six-bedroom family home benefiting from an open-plan extended kitchen/dining room and a separate annexe.

The layout offers a through reception room, extended kitchen/dining room, and an additional ground-floor bedroom/office with shower room. The first floor comprises five bedrooms and a family bathroom, while the second floor provides an additional bedroom and bathroom. Externally, the property benefits from off-street parking to the front for multiple vehicles, a garage to the rear, and a self-contained annexe.

Briar Avenue is a highly sought after residential street in SW16, distinguished by its elegant 1930s semi-detached and terraced homes and a long established, welcoming community. The area is exceptionally well served by excellent transport connections, renowned local schools and a superb selection of nearby amenities, making it an enduringly desirable place to live.

Features

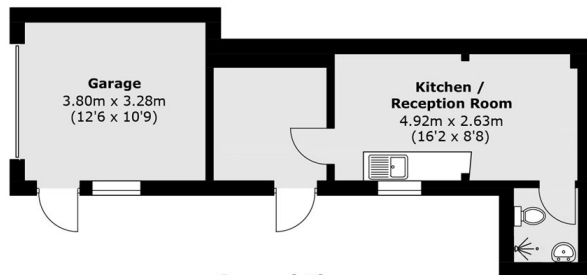
- Garage
- Separate annexe
- Six bedrooms
- Three bathrooms
- 2,500 sq ft
- EPC: C



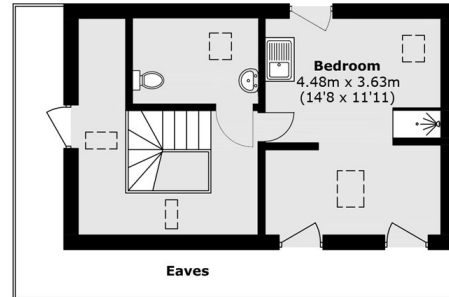




Briar Avenue,
London, SW16

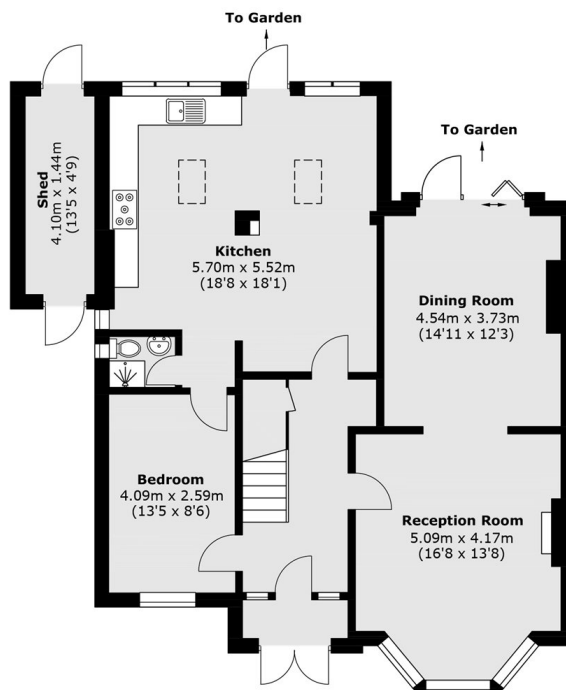


Ground Floor

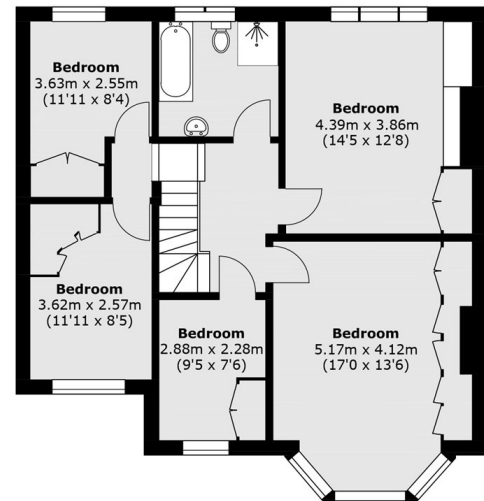


Eaves

Second Floor



Ground Floor



First Floor

Total area (approx.): 207.5 sq. m (2,233.4 sq. ft)

Garage : 12.4 sq. m (133.5 sq. ft)

Outbuilding : 21.4 sq. m (230.3 sq. ft)

Shed: 6.2 sq. m (66.7 sq. ft)

(Excluding Eaves)