



Cobbold Road, W12

£1,400,000

5 3 2 C

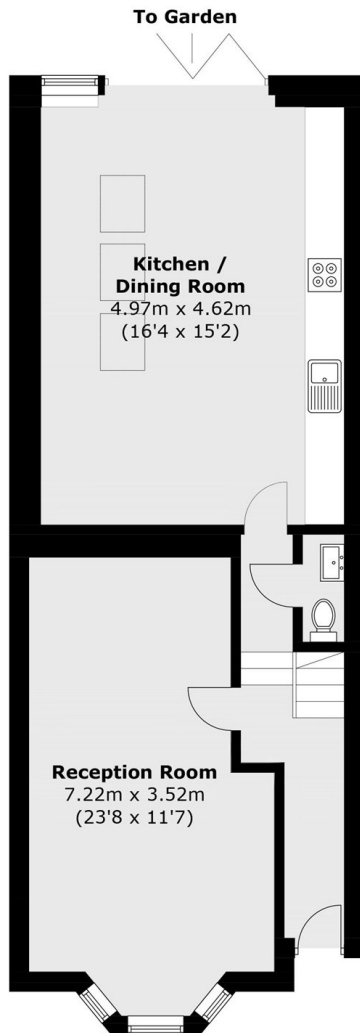
• High Spec Refurbishment

•

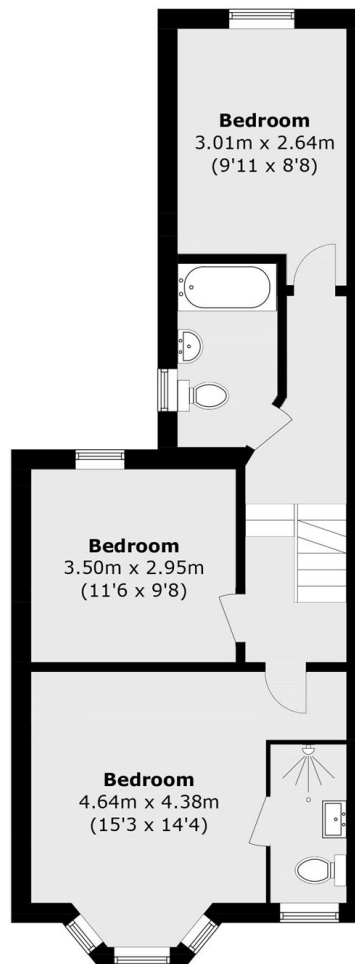
•

South Facing Patio

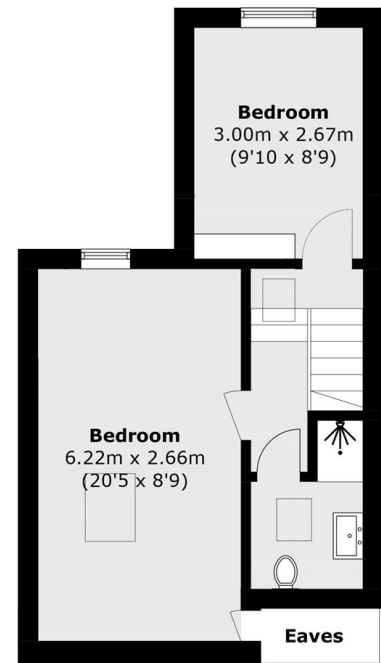
No Onward Chain



Ground Floor



First Floor



Second Floor

Total area (approx.): 144.2 sq. m (1,552.1 sq. ft)
(Excluding Eaves)

Marsh & Parsons Askew Road

120 Askew Road, London,
W12 9BL
020 8102 0123

We aim to make our particulars both accurate and reliable. However, they are not guaranteed; nor do they form part of an offer or contract. If you require clarification on any points then please contact us, especially if you're traveling some distance to view. Please note that appliances and heating systems have not been tested and therefore no warranties can be given as to their good working order.