



## Ashleigh Road, SW14

£865,000



- Three Bedrooms
- Modern Stylish Kitchen

- Private Garden
- Spacious Separate Reception

- Integrated Appliances
- Wood Flooring Throughout







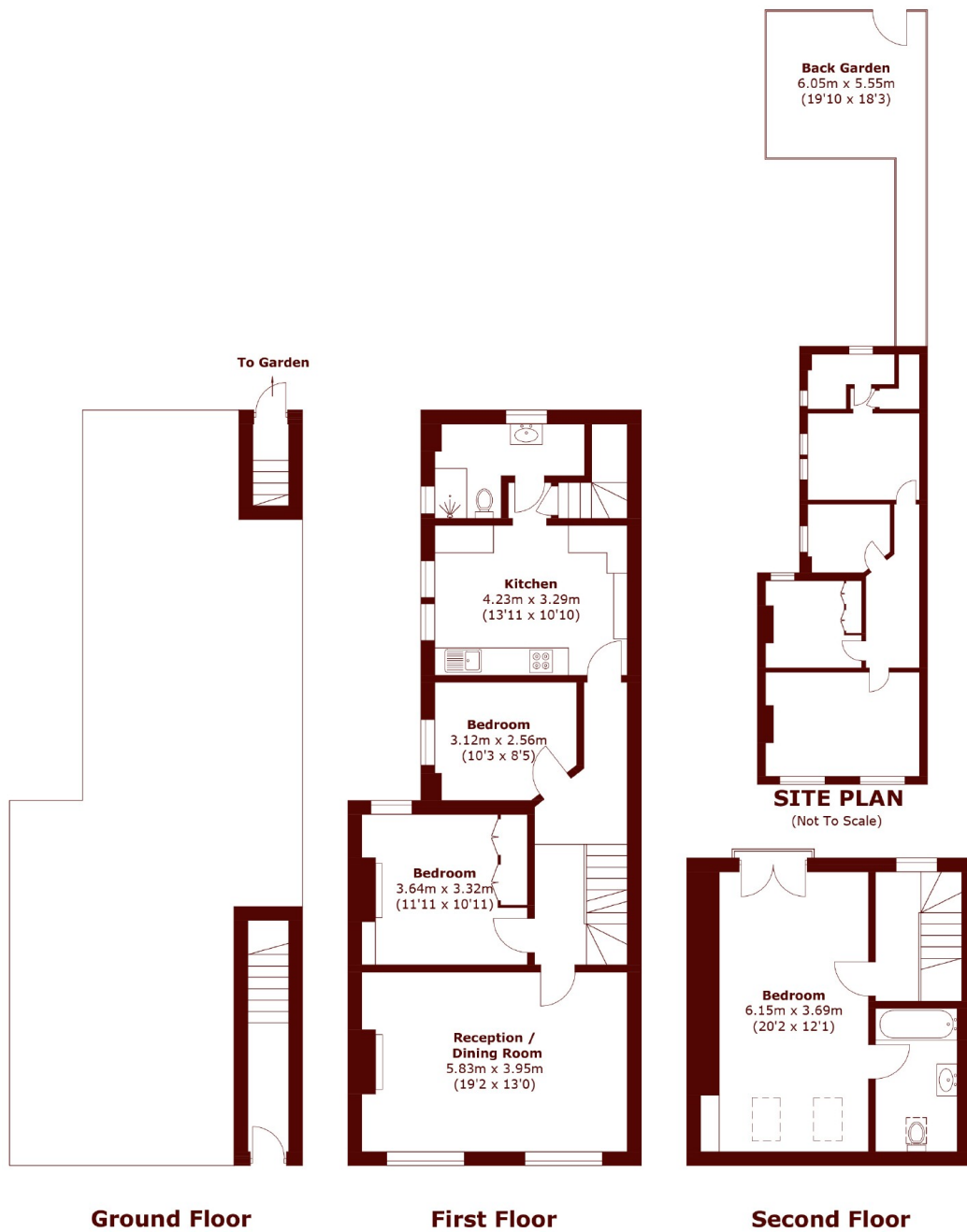
## ABOUT THE PROPERTY

A fantastic opportunity to purchase this large, spacious, light and airy Edwardian maisonette on this quiet residential road which is presented in immaculate condition and has plenty of period charm and character. The property benefits from it's own private ground floor entrance. On the first floor is a spacious reception room across the full width of the front of the property and has a westerly aspect with an abundance of natural light. Off the hallway is a well sized double bedroom and smaller third bedroom.

The current owners have have installed a bespoke newly fitted kitchen with cabinets from Tikamoon, featuring integrated appliances and built in water filtration system. The owners have installed high quality wooden flooring throughout along with plush new wool carpets in the bedrooms. At the rear, they've fully renovated the garden and cleverly created a utility area. There is an internal staircase off the kitchen which leads down to the ground floor with a pathway leading to a lovely rear private garden which is a great oasis and feel.

Barnes Bridge and Mortlake Stations are a short walk away, which offer a direct service to London Waterloo. Ashleigh Road is conveniently placed for the shops and amenities of White Hart Lane and Barnes High Street. Outstanding local schools are also within easy reach.





Total area (approx.): 121.4 sq. m (1,307 sq. ft)

## Marsh & Parsons Barnes

73-75 Church Road, London,  
SW13 9HH  
020 8563 8333

We aim to make our particulars both accurate and reliable. However, they are not guaranteed; nor do they form part of an offer or contract. If you require clarification on any points then please contact us, especially if you're traveling some distance to view. Please note that appliances and heating systems have not been tested and therefore no warranties can be given as to their good working order.