



Kilmington Road, SW13

£1,600,000



- Stunning New Build
- Four Bedrooms

- South-West Facing Garden
- Excellent Location

- Bright
- Spacious



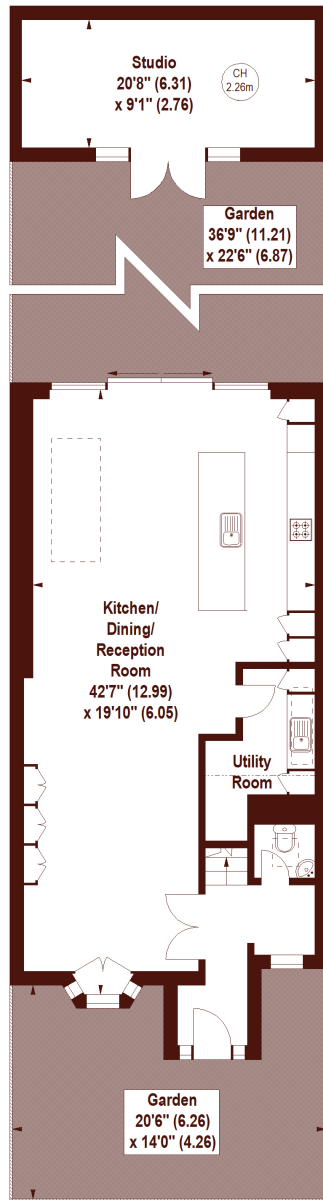


ABOUT THE PROPERTY

This beautifully finished southwest-facing home offers bright, spacious living across three floors. Immaculately presented, it features a large open-plan reception, modern kitchen with built-in Miele appliances, utility room, cloakroom, four bedrooms, and two bathrooms. Additional highlights include a landscaped garden and a detached studio ideal as a home office, gym, or guest room.

Kilmington Road is conveniently located within minutes of the renowned St Pauls School for boys on Lonsdale Road, The Harrodian School and Swedish School. Barnes Village and Hammersmith are also within easy reach.





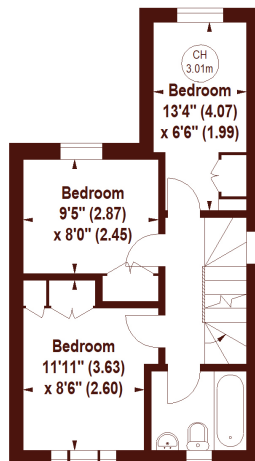
GROUND FLOOR

Kilminster Road, SW13

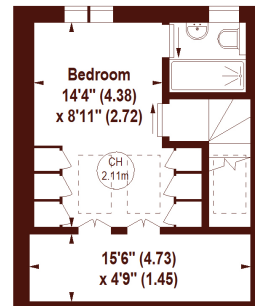
APPROX. GROSS INTERNAL FLOOR AREA 1725 SQFT / 160.25 SQM
(INCLUDING STUDIO)
STUDIO AREA 187 SQFT / 17.37 SQM



Key :
CH - Ceiling Height



FIRST FLOOR



SECOND FLOOR

Not to scale, for guidance only and must not be relied upon as a statement of fact.
All measurements and areas are approximate only

Marsh & Parsons Barnes

73-75 Church Road, London,
SW13 9HH
020 8563 8333

We aim to make our particulars both accurate and reliable. However, they are not guaranteed; nor do they form part of an offer or contract. If you require clarification on any points then please contact us, especially if you're traveling some distance to view. Please note that appliances and heating systems have not been tested and therefore no warranties can be given as to their good working order.