



Carmalt Gardens, SW15

£550,000



- Charming Victorian Building
- Two Double Bedrooms

- Great Natural Light
- Generous Living Space

- Quiet Residential Street
- Desirable Putney Location





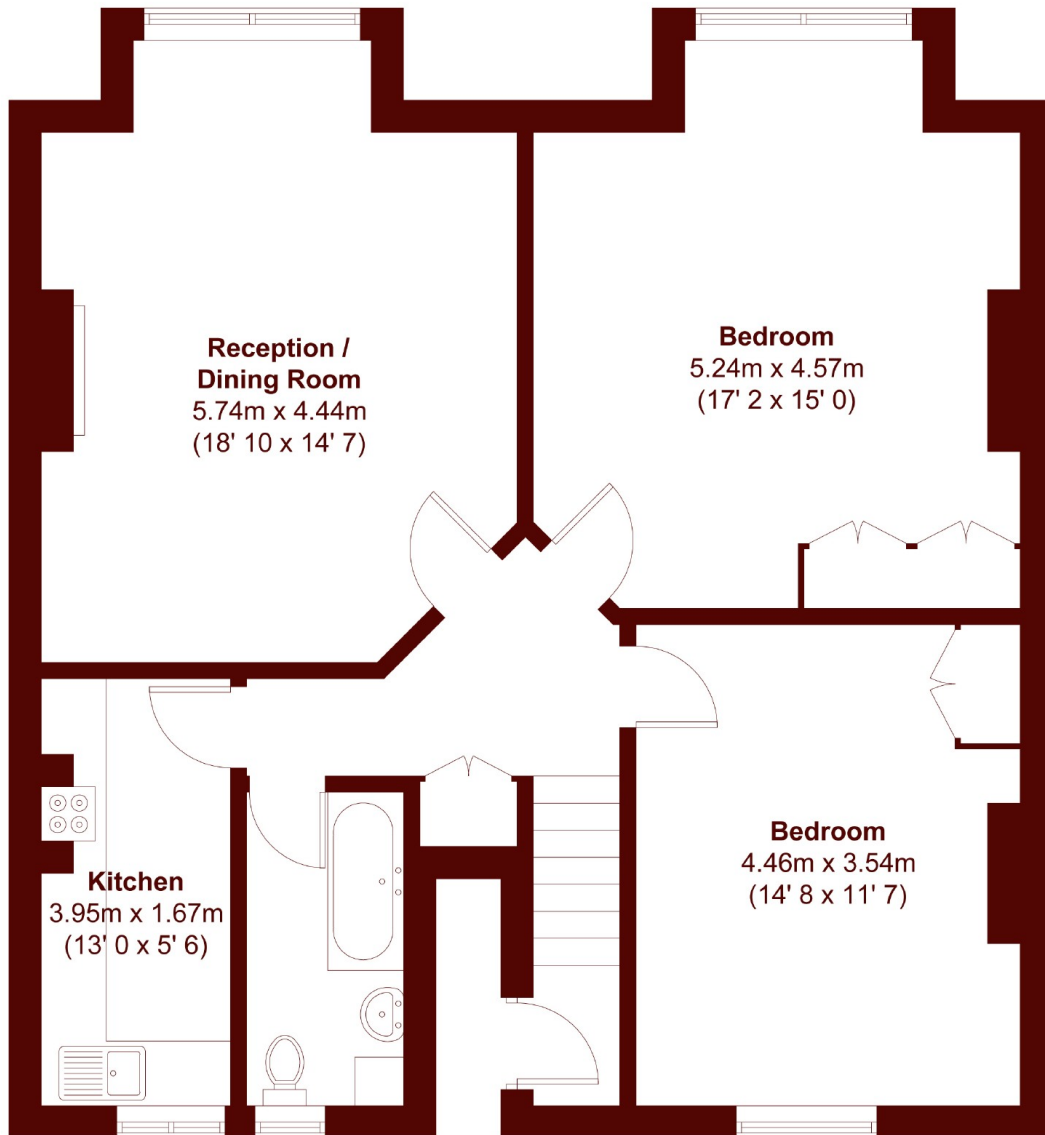
ABOUT THE PROPERTY

A fantastic opportunity to purchase a two double bedroom top floor flat in this charming double fronted end-of-terrace Victorian building on a quiet residential street. The flat boasts well-proportioned bedrooms, offering plenty of space for relaxation and rest. The property provides a great opportunity for those seeking a peaceful yet connected lifestyle in one of Southwest London's most desirable locations.

Purchasers will also benefit from very low annual charges and a 999-year lease on completion. There is the rare opportunity to rent or purchase the large loft space which is available via separate negotiation.

ChatGPT said: Carmalt Gardens is ideally situated just south of Upper Richmond Road, close to Putney's excellent amenities. Both Putney mainline and East Putney underground stations are nearby, along with top-rated schools. Tucked away at the quiet, leafy end of the road, the spacious, light-filled rooms offer green views. The rear overlooks the Putney Lawn Tennis Club courts and is a short walk from the shops, cafes, and restaurants of Putney High Street.





Second Floor

APPROX. GROSS INTERNAL FLOOR AREA
887 SQFT / 82.4 SQM

Marsh & Parsons Barnes

73-75 Church Road, London,
SW13 9HH
020 8563 8333