



Warwick Drive, SW15

£550,000



- Two Bedrooms
- Second Floor

- Private Balcony
- Lift Service

- On-Site Caretaker
- Well Maintained Communal Gardens





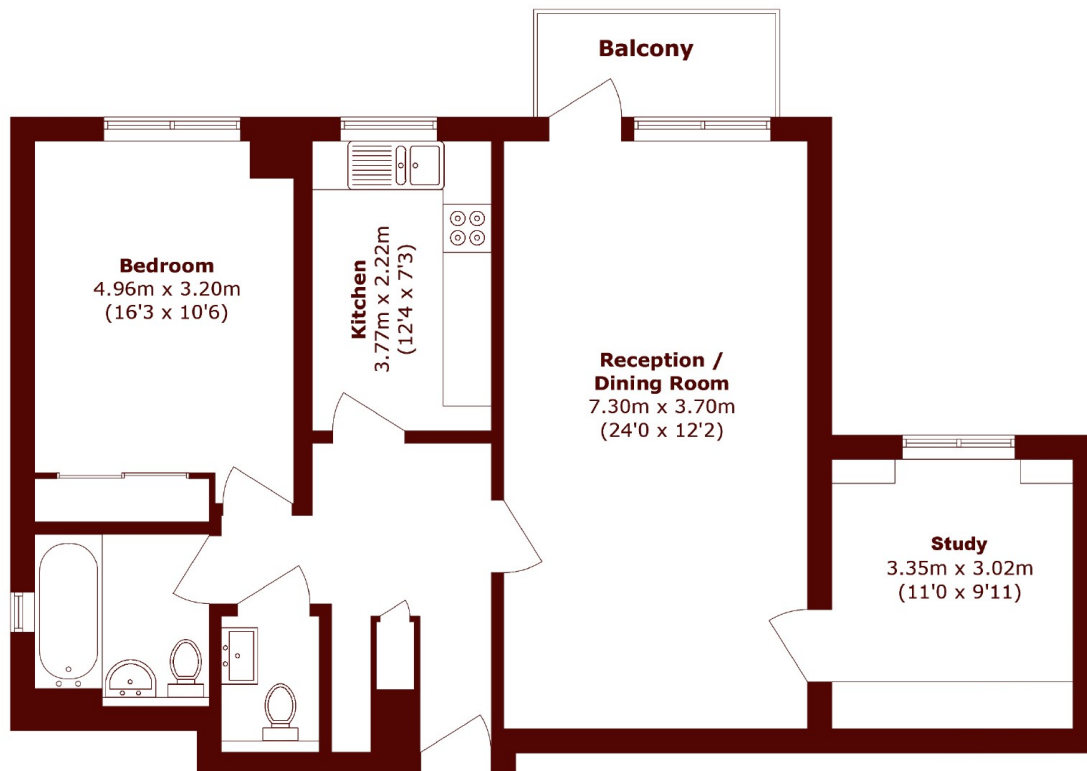
ABOUT THE PROPERTY

Marsh & Parsons is proud to represent this second floor stylish and chic apartment. The property comprises an entrance hallway, large double bedroom with built in wardrobes, modern kitchen, large separate reception room with private balcony and spacious study room / spare room off the reception room.

Willow Lodge also benefits from well maintained communal gardens, lift service and an on-site caretaker. There are also an allocated parking space which comes with the flat in a locked up garage.

Willow Lodge is located in Warwick Drive between the Upper Richmond Road, SW15 and Queens Ride, SW13. Barnes Village, Putney, East Sheen and Richmond are all easily accessed by local bus routes. Barnes Common and Putney Common are a short walk away and there is good access to West Putney and the River Thames.





Total area (approx.): 81.0 sq. m (871.8 sq. ft)
Balcony area (approx.): 3.8 sq. m (40.9 sq. ft)

Marsh & Parsons Barnes

73-75 Church Road, London,
SW13 9HH
020 8563 8333