



## Warwick Drive, SW15

£350,000



- One Bedroom
- Share of Freehold
- Underground Parking
- Private Balcony
- Communal Terrace
- Chain Free









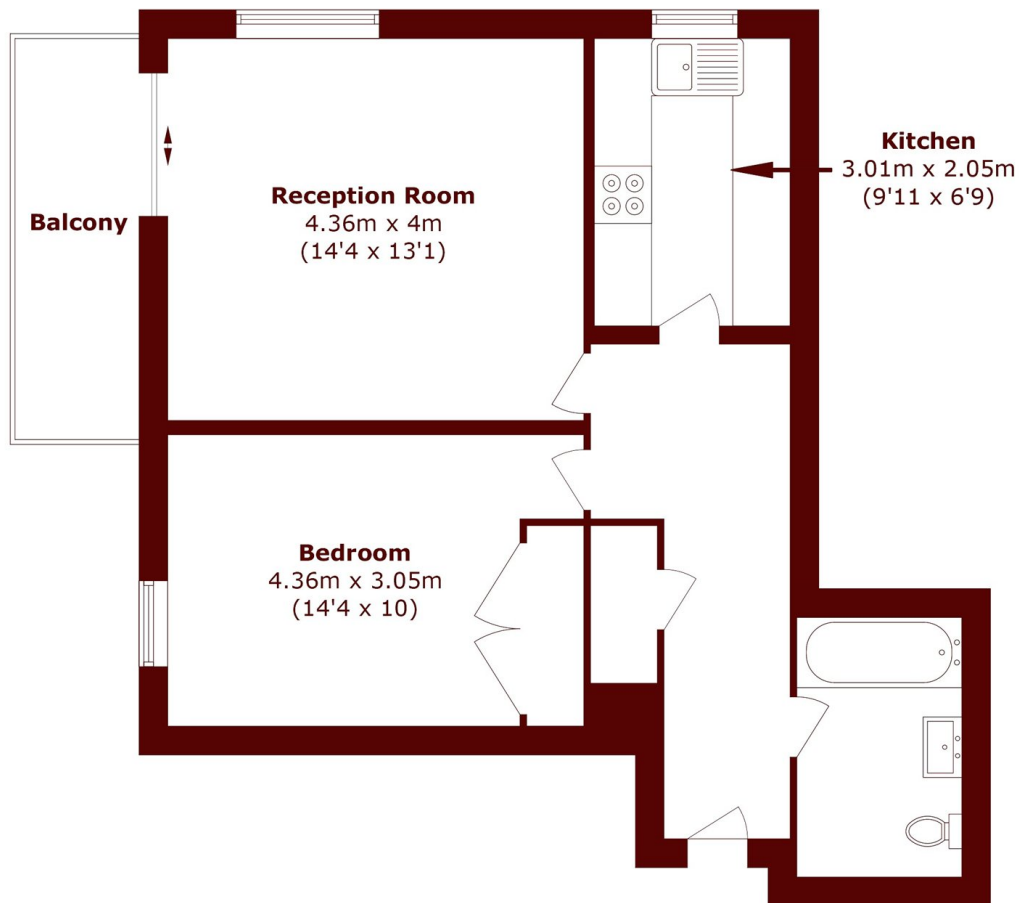
## ABOUT THE PROPERTY

A light and airy one bedroom apartment situated on the fifth floor of this popular development. It is located within walking distance to Barnes station and with easy access to central Putney shopping, restaurants and the station.

The apartment boasts a lovely bright reception room with double aspect and doors leading out onto a private balcony with a great view over London to the City. It has a good sized double bedroom with built-in wardrobes, separate kitchen and a family bathroom. The apartment also benefits from a secure numbered underground parking space.

March Court is located on Warwick Drive, just the shortest of strolls from Barnes mainline station, with its regular services into Clapham Junction and Waterloo. The glorious expanses of Barnes and Putney Commons are on the doorstep. The Roehampton Club is also located just minutes away, offering an 18-hole golf course, tennis, squash, croquet, gym and fitness studios, and both indoor and outdoor swimming pools.





Total area (approx.): 53.3 sq. m (573.7 sq. ft)  
Balcony area (approx.): 5.4 sq. m (58.1 sq. ft)

## Marsh & Parsons Barnes

73-75 Church Road, London,  
SW13 9HH  
020 8563 8333