



Riverview Gardens, SW13

£1,150,000



- Two Bedrooms
- Two Bathrooms

- Ground Floor
- Mansion Flat

- Private South Facing Garden
- Quiet Residential Road





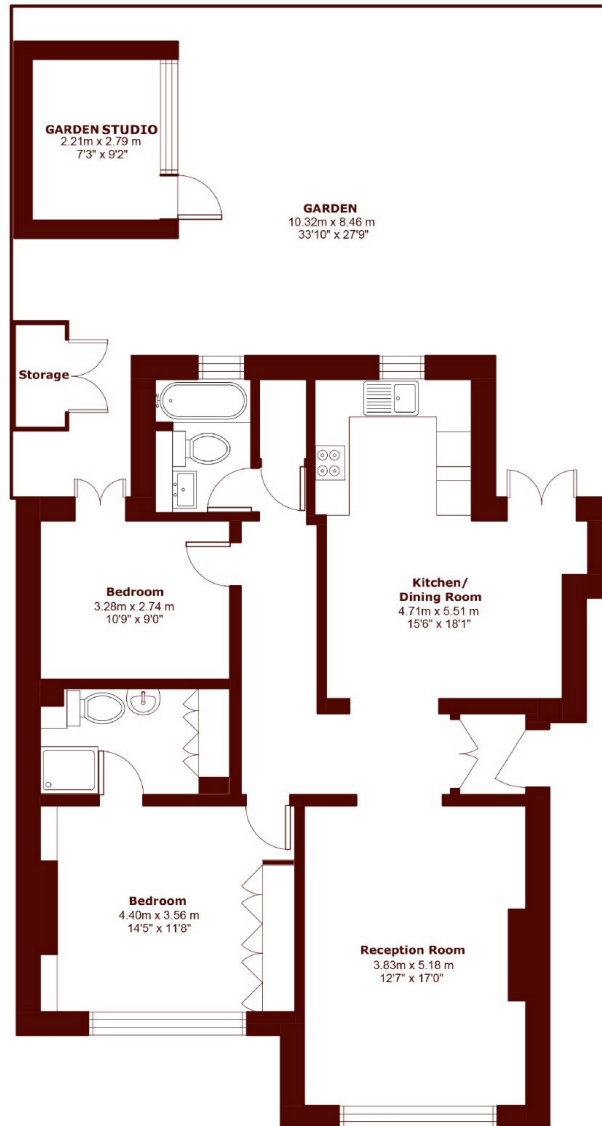
ABOUT THE PROPERTY

Marsh & Parsons is proud as punch to be representing this two bedroom, two bathroom ground floor mansion flat with south facing private garden on this highly sought after quiet residential tree-lined road. The property has been renovated by the existing owner. The flat comprises a modern kitchen with integrated appliances with an eat-in dining area. French doors that lead out onto a mature private garden which benefits from a fully wired home studio with full insulation which is an additional 65 square foot plus.

The flat flows across the hallway into a separate reception room with high ceilings and period features which include feature fireplace. The main bedroom is a great size and benefits from en suite. The second bedroom fits a double bed and has direct access into the garden. The property benefits from a second bathroom and plenty of storage throughout with a separate laundry area. It also has access to the communal riverside gardens running along the River Thames, perfect for riverside walks and benefits from a porters office.

Riverview Gardens is near the Thames, with easy access to Hammersmith Broadway, Barnes Common, and Barnes Station. Nearby schools include St Paul's, The Harrodian, and the Swedish School. This of this





Total area (approx.): 94.22 sq. m (1,014.0 sq. ft)

Marsh & Parsons Barnes

73-75 Church Road, London,
SW13 9HH
020 8563 8333