

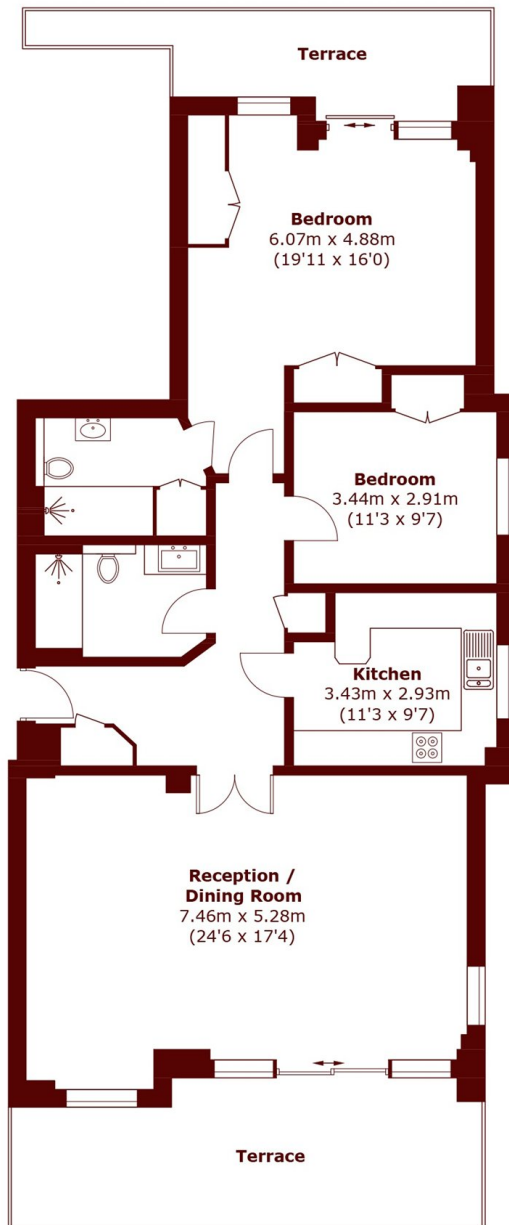


Holst Mansions, SW13

£1,175,000



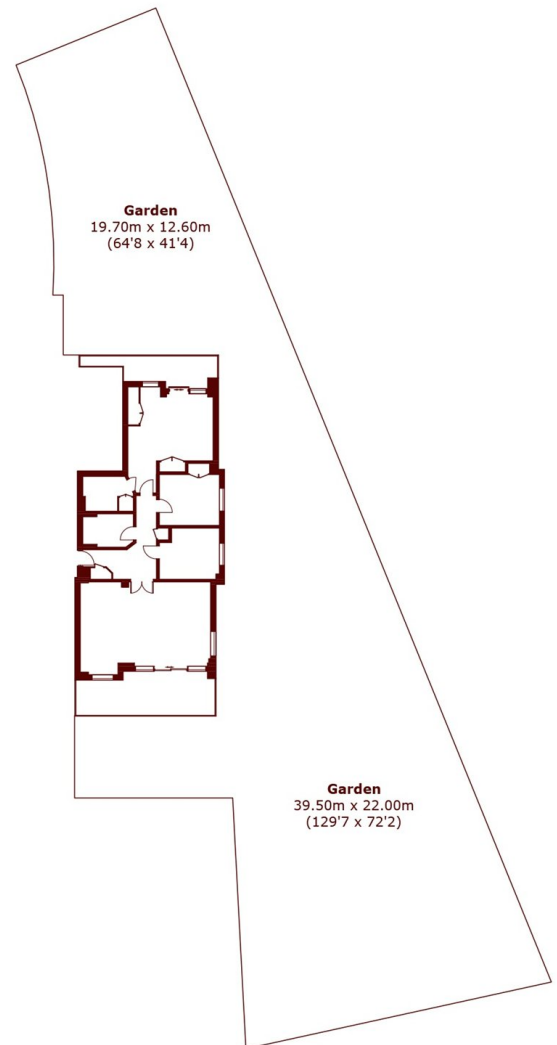
- Two double bedrooms
- Two bathrooms
- Large reception room
- Modern separate kitchen
- Private roof terraces for entertaining
- Barnes Waterside / River Views



Raised Ground Floor

Total area (approx.): 108.0 sq. m (1,162.5 sq. ft)

Terrace area (approx.): 28.7 sq. m (308.9 sq. ft)



SITE PLAN

(Not To Scale)

Marsh & Parsons Barnes

73-75 Church Road, London,
SW13 9HH
020 8563 8333

We aim to make our particulars both accurate and reliable. However, they are not guaranteed; nor do they form part of an offer or contract. If you require clarification on any points then please contact us, especially if you're traveling some distance to view. Please note that appliances and heating systems have not been tested and therefore no warranties can be given as to their good working order.