



Cleveland Gardens, SW13

£2,000,000



- Victorian Family Home
- Four / Five bedrooms

- Double Reception Room
- Beautifully Presented

- Stunning Garden
- Heart of Barnes Village





ABOUT THE PROPERTY

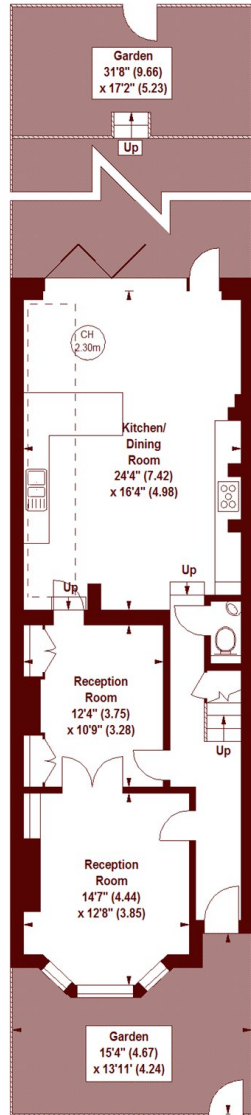
Marsh & Parsons have delighted to bring to the market this stunning four / five bedroom family house right in the heart of Barnes Village.

The property is beautifully-presented throughout, with a bright and spacious double reception room leading to a large contemporary kitchen with dining space. Bi-fold doors lead out to the private garden. Upstairs is the master suite with en suite bathroom, three further double bedrooms, a family bathroom and a separate walk-in wardrobe which could be used as a bedroom. There is an additional WC on the ground floor and excellent storage throughout.

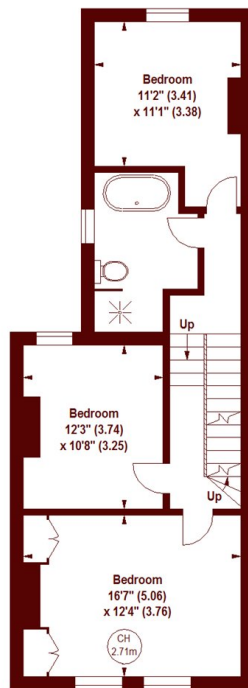
Cleveland Gardens is a pretty tree-lined street perfectly placed for the shops and boutiques of Barnes Village and Barnes High Street. Barnes Bridge station is only minutes away, giving easy access to Waterloo.



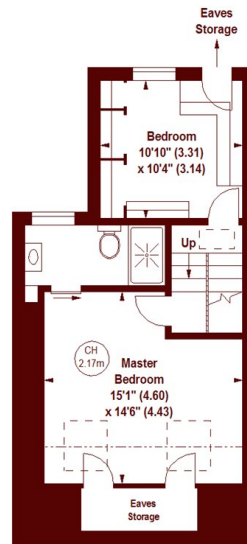
Key :
CH - Ceiling Height



GROUND FLOOR



FIRST FLOOR



SECOND FLOOR

Cleveland Gardens, SW13
APPROX. GROSS INTERNAL FLOOR AREA 2011 SQFT / 186.82 SQM
(Including Eaves Storage)
Eaves Storage
29 SQFT / 2.69 SQM

The floor plan is not to scale and measurements and areas shown are approximate and therefore should be used for illustrative purposes only. The plan has been prepared in accordance with the RICS code of Measuring Practice and whilst we have confidence in the information produced, it must not be relied on. If there is any aspect of particular importance, you should carry out or commission your own inspection of the property.
Copyright of FeaturePRO.

Marsh & Parsons Barnes
73-75 Church Road, London,
SW13 9HH
020 8563 8333

We aim to make our particulars both accurate and reliable. However, they are not guaranteed; nor do they form part of an offer or contract. If you require clarification on any points then please contact us, especially if you're traveling some distance to view. Please note that appliances and heating systems have not been tested and therefore no warranties can be given as to their good working order.

marshandparsons.co.uk