



Thirsk Road, SW11

£875,000



- Three Bedrooms
- Two Bathrooms

- Victorian Conversion
- Private Patio

- Excellent Condition
- Pretty Residential Road



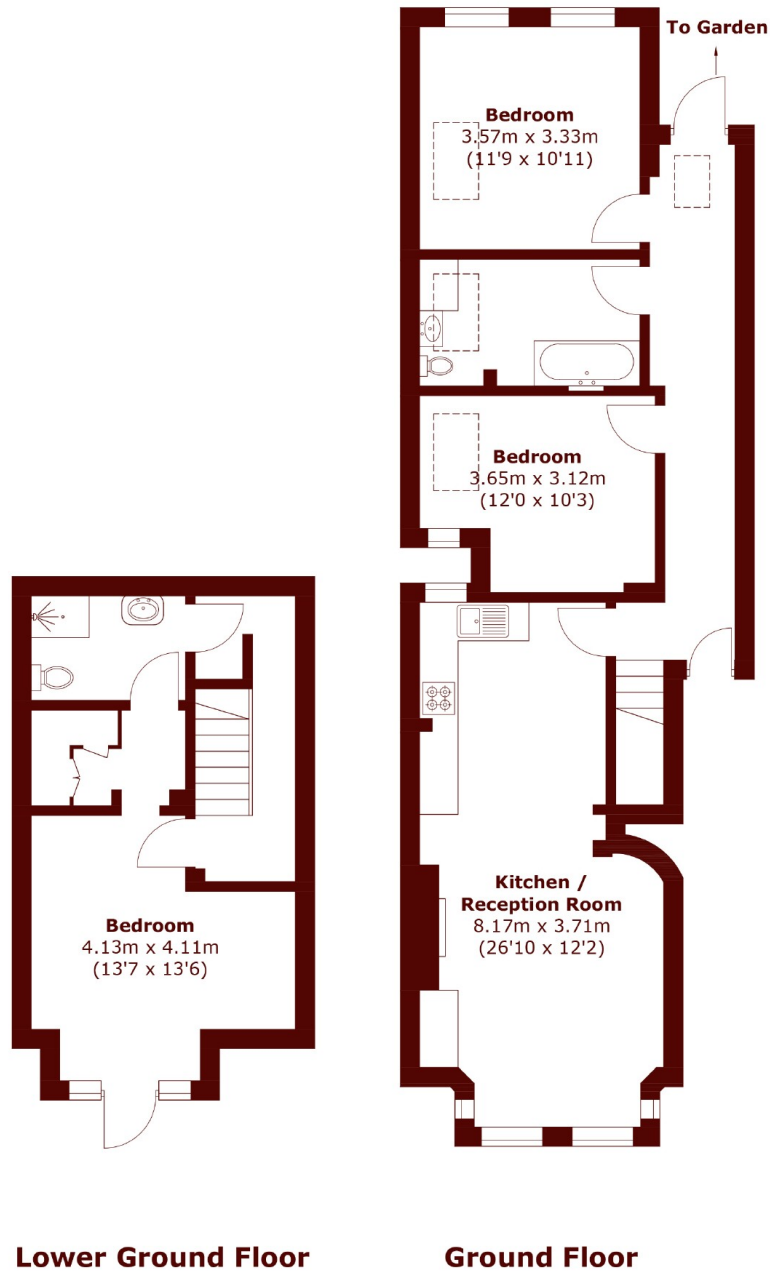


ABOUT THE PROPERTY

An exceptional three bedroom, two bathroom split level Victorian conversion flat with a private patio garden. It has plenty of original features and a spacious open plan kitchen and living room.

Thirsk Road is a pretty residential road located off the north side of Clapham Common. It is conveniently located for access to Clapham Junction station. The amenities of Northcote Road, St. John's Hill and Clapham Old Town are all close by and the wide open space of Clapham Common is at the end of the road. Council Tax Band- D





Total area (approx.): 100.1 sq. m (1,077.5 sq. ft)

Marsh & Parsons Battersea
118 Northcote Road, London,
SW11 6QP
020 8673 4377

We aim to make our particulars both accurate and reliable. However, they are not guaranteed; nor do they form part of an offer or contract. If you require clarification on any points then please contact us, especially if you're traveling some distance to view. Please note that appliances and heating systems have not been tested and therefore no warranties can be given as to their good working order.