



Lochaline Street, W6

£4,500 per week (pcm)



- 4 bedrooms

- 2 bathrooms

- Large Garden





ABOUT THE PROPERTY

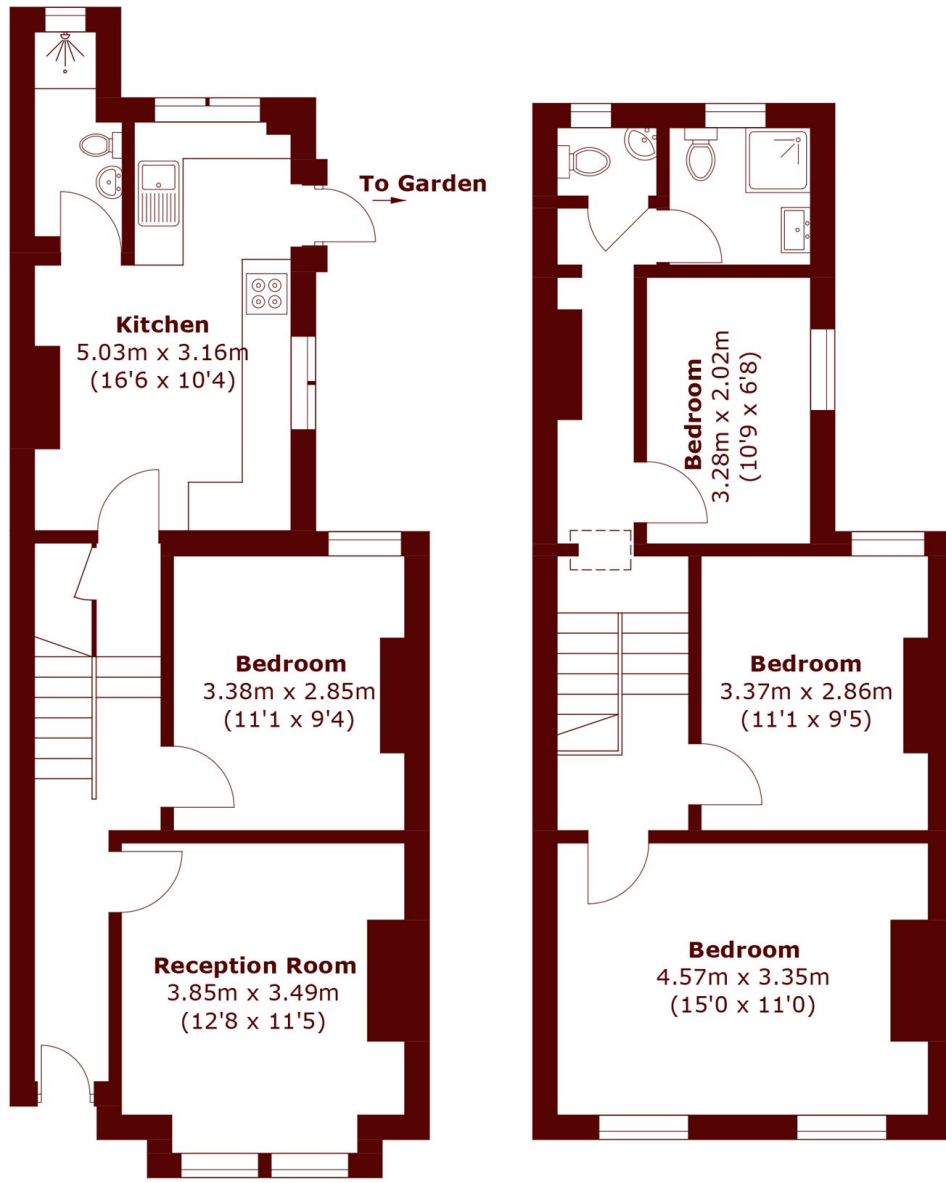
The ground floor features a large eat-in kitchen with ample space for dining, leading directly onto a generous private garden ideal for entertaining or family gatherings. A separate reception room at the front of the house provides a cosy and versatile living area.

Upstairs, the property offers four well-proportioned bedrooms and two modern bathrooms. The home benefits from excellent natural light and a fresh contemporary finish throughout.

Lochaline Street located at the top of the Alpabet Streets is a quiet residential road within easy reach of Fulham Palace Road and the River Thames, offering a fantastic selection of local amenities, cafes, and transport links via Hammersmith and Barons Court Underground Stations (District and Piccadilly Lines).

An ideal home for families or professionals seeking space, style, and a private garden in a sought-after Fulham location





Ground Floor

First Floor

Total area (approx.): 97.9 sq. m (1,053.8 sq. ft)

Marsh & Parsons Bishops Park

333 Fulham Palace Road,
London, SW6 6TE
020 7993 9888