



Mackenzie House, SW6

£2,500 pcm



- One-bedroom penthouse apartment
- Access to both Hammersmith and Barons Court underground
- Moments from the extremely popular Munster Village



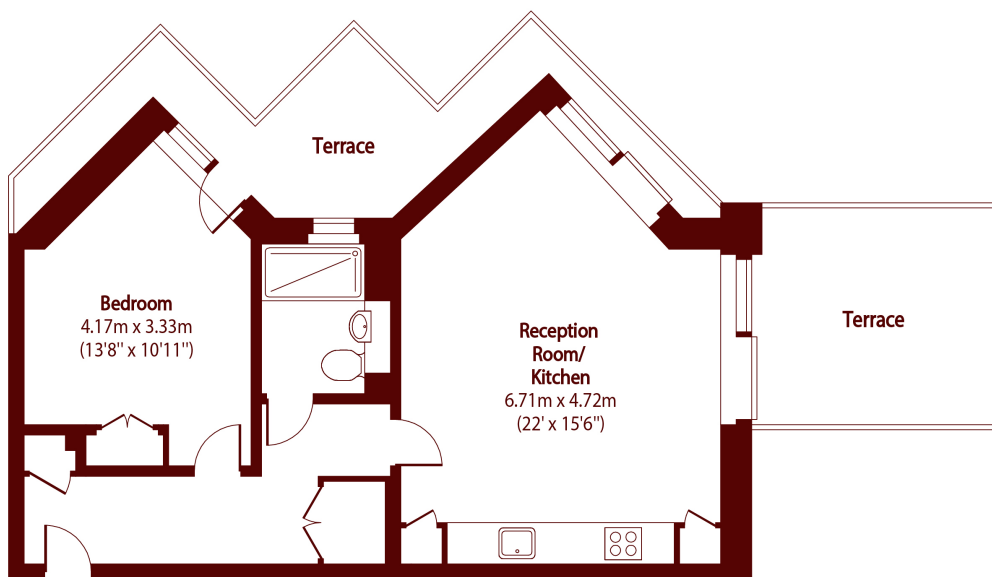


ABOUT THE PROPERTY

This striking property is set on the second floor of a contemporary residential building which is just over two years old. The flat, is made up of a large open-plan kitchen and living room with two balconies, a large double bedroom and a family bathroom. There is the added benefit of inbuilt storage in the bedroom. The building has a secure fob entry system, lift access, bike storage and a communal roof terrace with far reaching views over London.

Mackenzie House is located moments from the shops and cafes on Munster Road and just a short walk from the River Thames and the green spaces of Bishops Park. When it comes to transport, the property is an easy walk to the underground links at Hammersmith and Putney Bridge stations and there are frequent buses leaving from Fulham Palace Road which take you in and out of Central London. For families, there is a fantastic selection of local schools to choose from. Viewings are highly recommended!

Council Tax Band - D



Total area (approx): 56.21 sq m (605 sq. ft)

Terrace total area (approx): 23.32 sq m (251 sq. ft)

Marsh & Parsons Bishops Park

333 Fulham Palace Road,
London, SW6 6TE
020 7993 9888