



Everington Street, W6

£1,000,000

3 2 2 D

- Freehold
- Central location
- Three double bedrooms
- Two bathrooms
- Patio garden
- Excellent transport links

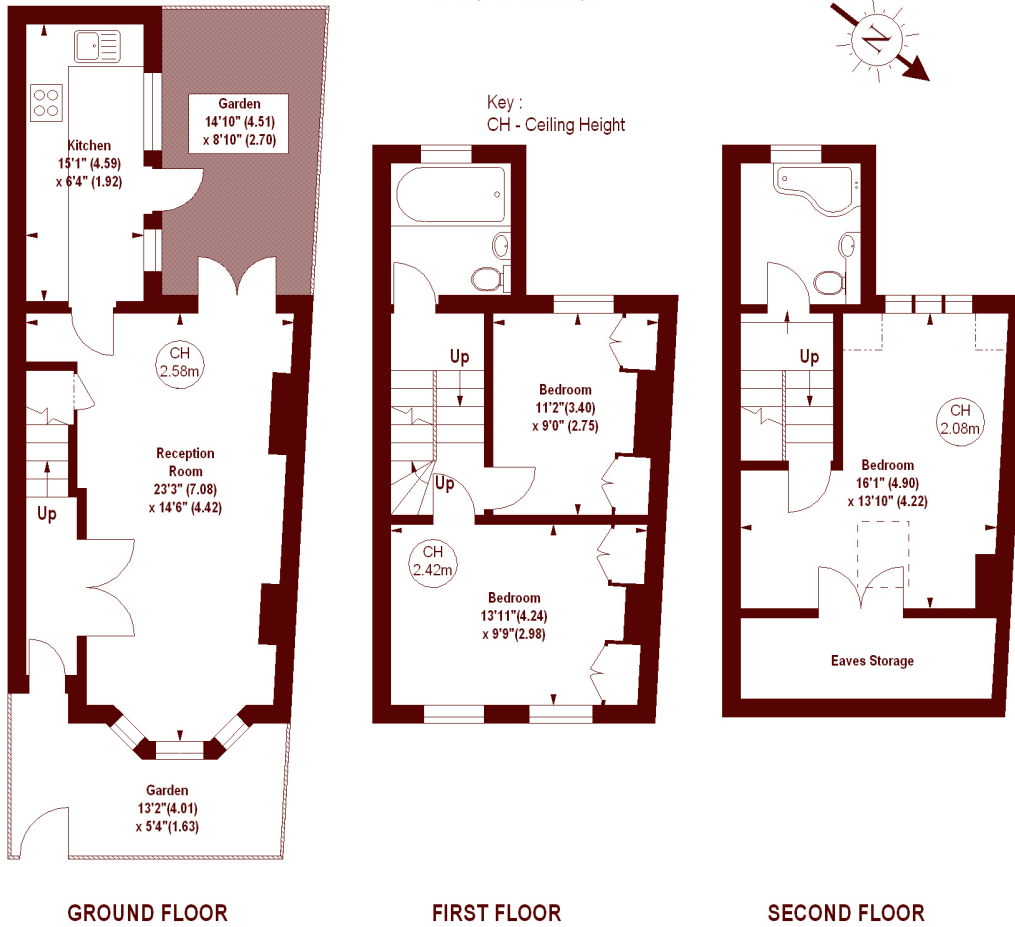
Everington Street, W6

APPROX. GROSS INTERNAL FLOOR AREA 1107 SQFT / 102.84 SQM

(Including Eaves Storage)

Eaves Storage

67 SQFT / 6.22 SQM



The floor plan is not to scale and measurements and areas shown are approximate and therefore should be used for illustrative purposes only. The plan has been prepared in accordance with the RICS code of Measuring Practice and whilst we have confidence in the information produced, it must not be relied on. If there is any aspect of particular importance, you should carry out or commission your own inspection of the property.
Copyright of FeaturePRO.

Marsh & Parsons Bishops Park

333 Fulham Palace Road,
London, SW6 6TE
020 7993 9888