



Queensmill Road, SW6

£3,000 pcm



- Two double bedrooms

- Large eat in kitchen

- Duplex



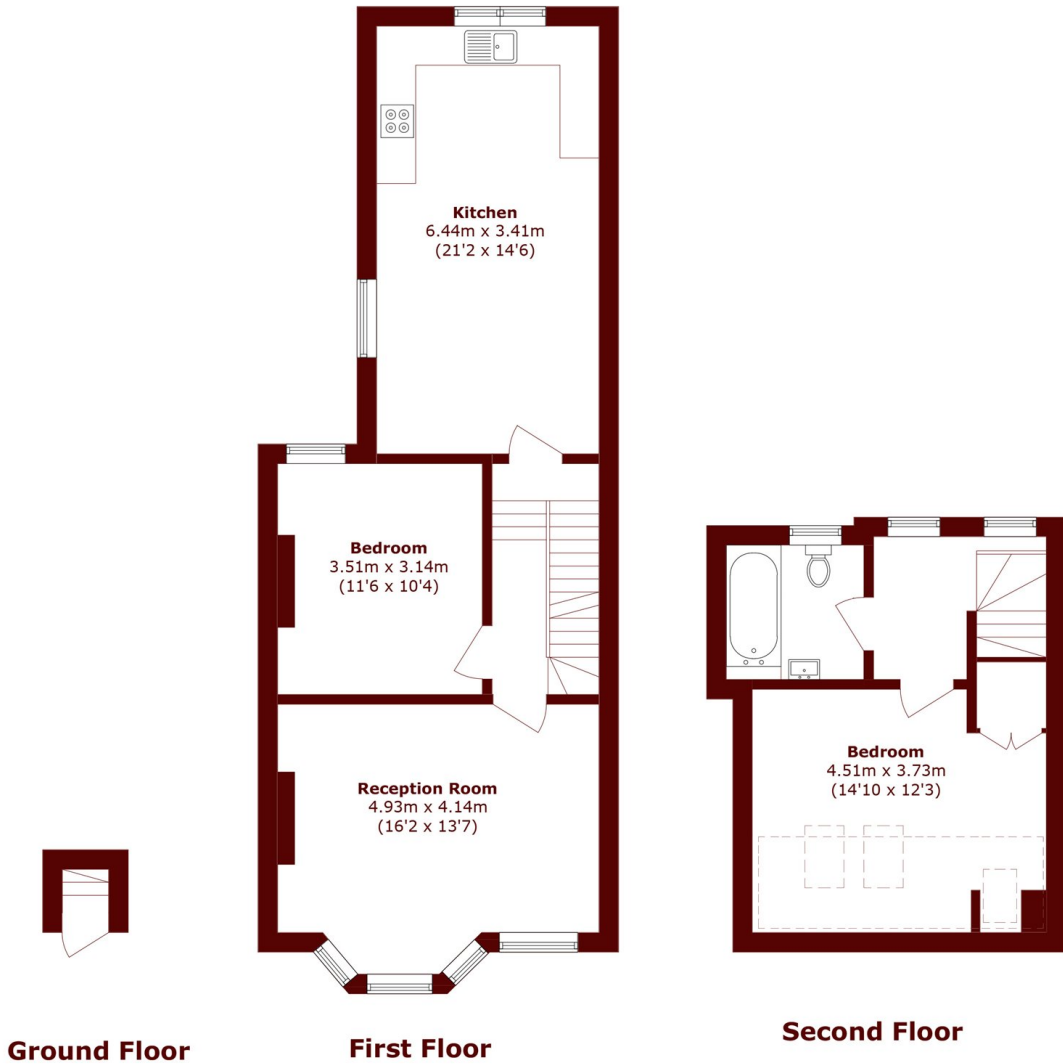


ABOUT THE PROPERTY

A well-presented first floor flat ideally located on the popular Queensmill Road in the heart of Fulham. The property offers bright and well-balanced accommodation, comprising a spacious reception room with ample space for dining, a separate fitted kitchen, a generously sized double bedroom, and a modern bathroom suite. Large windows throughout allow for excellent natural light, creating a welcoming and airy feel.

Queensmill Road is a quiet residential street, perfectly positioned for the amenities of Fulham Road and Munster Road, offering an excellent selection of shops, cafés, restaurants, and local conveniences. The property also benefits from easy access to Bishops Park, the River Thames, and excellent transport links including Putney Bridge and Parsons Green Underground stations (District Line), as well as a number of bus routes. This flat would be ideal for a professional couple or single occupant, offering comfortable living in a highly sought-after SW6 location.





Total area (approx.): 81.2 sq. m (874.0 sq. ft)

National Guidelines (may differ depending on Local Authority).

- E) 4.6 square meters > = no one
- D) 4.6 - 6.5 square meters = 1/2 person (Child up to 10 years)
- C) 6.5 - 8.4 square meters = 1 person
- B) 8.4 - 10.2 square meters = 1 1/2 people
- A) 10.2 square meters < = 2 people

Marsh & Parsons Bishops Park

333 Fulham Palace Road,
London, SW6 6TE
020 7993 9888