

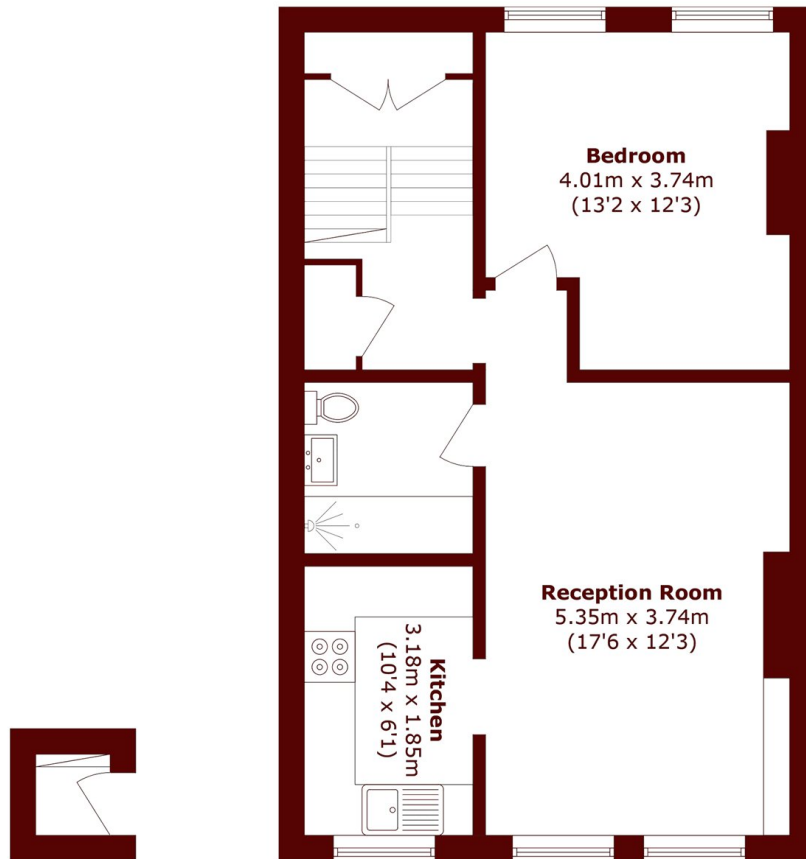


Blythe Road, W14

£499,999



- One Bedroom
- Top Floor
- Elegant Finish
- Share Of Freehold
- Quiet Location
- Open Plan Living



Second Floor

Third Floor

Total area (approx.): 55.2 sq. m (596.5 sq. ft)

Marsh & Parsons Brook Green

107-109 Shepherds Bush
Road, London, W6 7LP
020 7605 7765