



Hammersmith Grove, W6

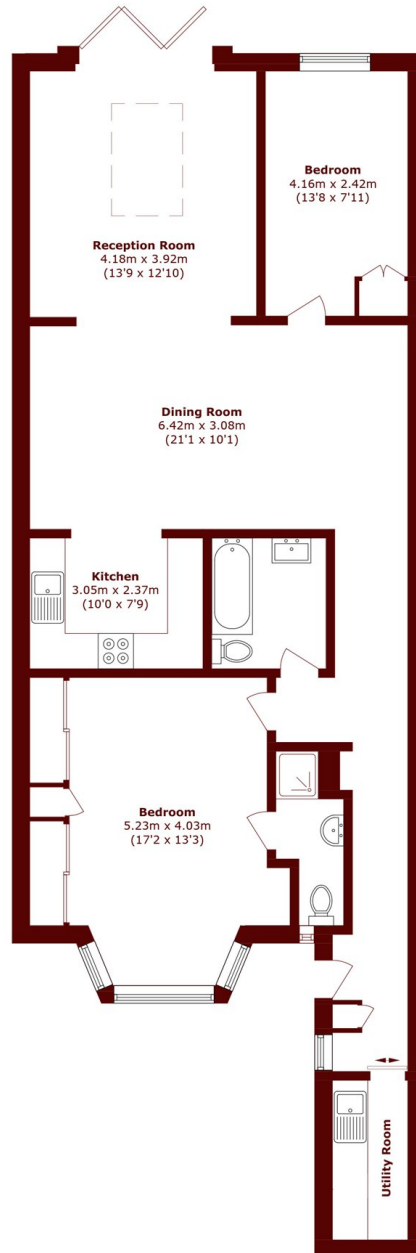
£800,000



- Two Bedrooms
- Two Bathrooms

- Private Garden
- Lower Ground Floor

- No Onwards Chain
- Brackenbury Village



Total area (approx.): 102.1 sq. m (1099.0 sq. ft)

Marsh & Parsons Brook Green

107-109 Shepherds Bush
Road, London, W6 7LP
020 7605 7765