



Windsor Way, W14

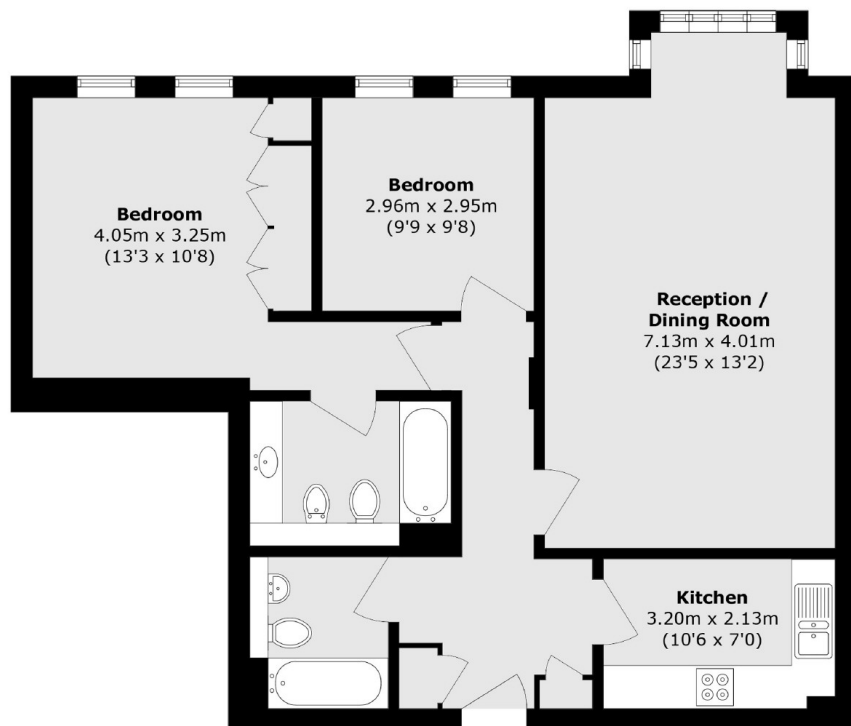
£759,950



- Two Bedrooms
- Two Bathrooms

- Lateral Apartment
- No Onwards Chain

- Gated Development
- Brook Green



Total area (approx.): 82.1 sq. m (883.7 sq. ft)

Marsh & Parsons Brook Green

107-109 Shepherds Bush
Road, London, W6 7LP
020 7605 7765