

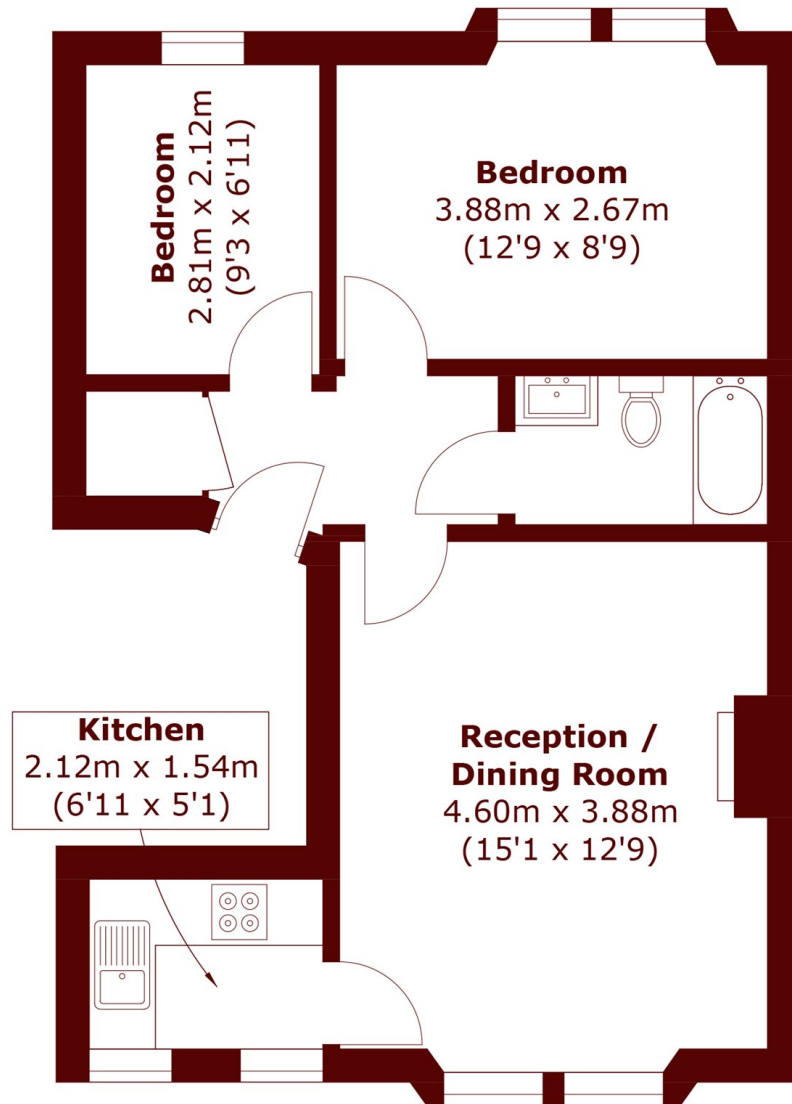


Mornington Avenue, W14

£550,000



- Two Bedrooms
- Open Plan Living
- No Onwards Chain
- Second Floor
- Red Brick Building
- Quiet Location



Total area (approx.): 48.3 sq. m (519.9 sq. ft)

Marsh & Parsons Brook Green

107-109 Shepherds Bush
Road, London, W6 7LP
020 7605 7765

We aim to make our particulars both accurate and reliable. However, they are not guaranteed; nor do they form part of an offer or contract. If you require clarification on any points then please contact us, especially if you're traveling some distance to view. Please note that appliances and heating systems have not been tested and therefore no warranties can be given as to their good working order.