



Pennard Road, W12

£1,600,000



- Four Bedrooms
- Freehold House

- West Facing Garden
- Modern Finish

- No Onwards Chain
- Westfield Shopping Centre





ABOUT THE PROPERTY

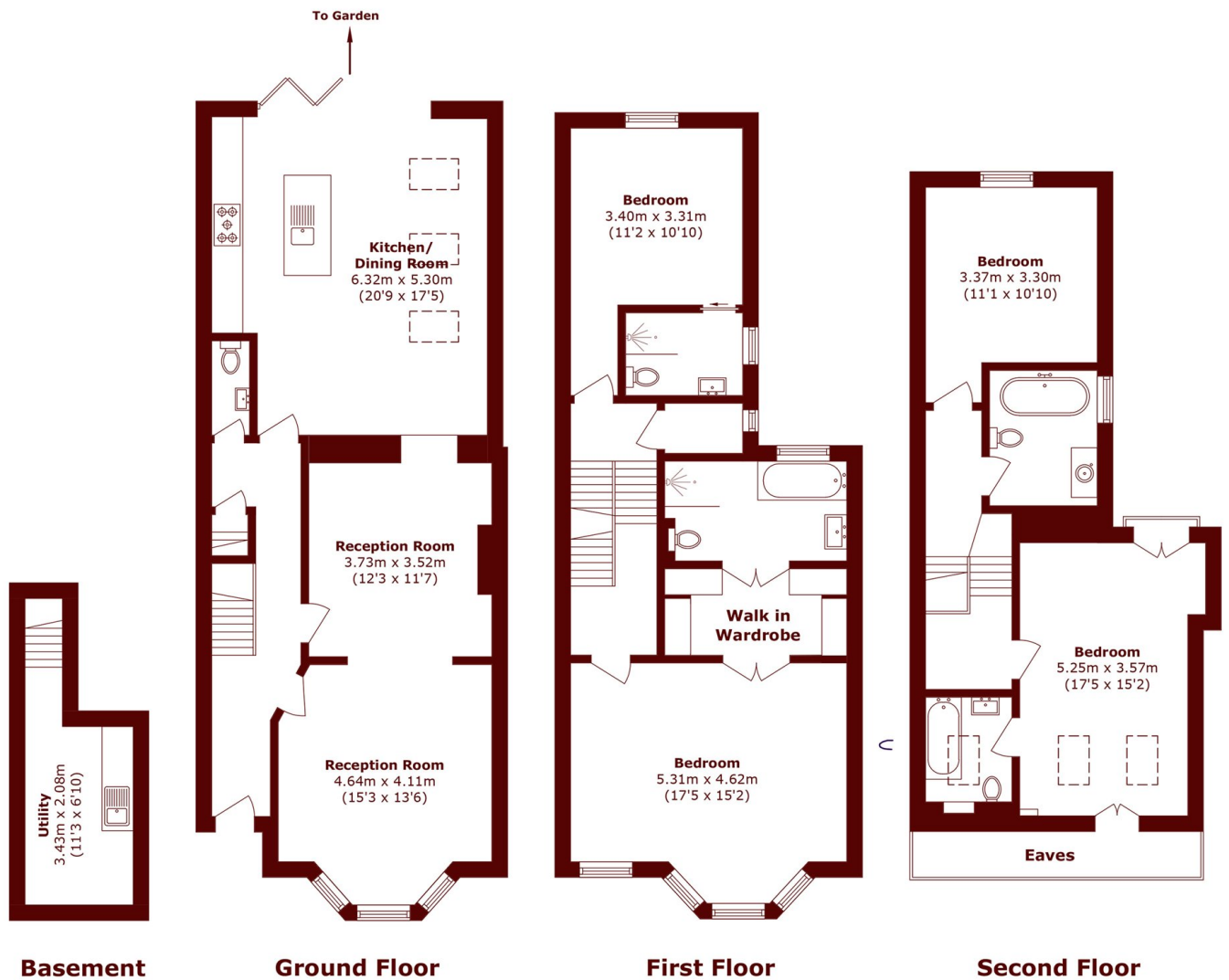
****OFFERS IN EXCESS OF**** A superbly presented four-bedroom Victorian family home, ideally located on one of Shepherd's Bush's most sought-after streets, just moments from the Tube, Westfield Shopping Centre, and the heart of W12.

The property has been extended and refurbished to a high standard, offering a 27ft double reception room with high ceilings and bay window, leading to an impressive open-plan kitchen-diner with bi-folding doors and roof lights. The west-facing garden is private, low maintenance, and enjoys excellent natural light.

Arranged over the upper two floors are four double bedrooms, three with en-suite bathrooms, plus a generous family bathroom. The principal bedroom features a full-width bay, walk-in wardrobe, and four-piece en-suite. The top floor provides flexible accommodation ideal for guests, teenagers, or home working. Further benefits include a ground floor WC, separate laundry room, ample storage, and excellent location. It would make an incredible family home.

Pennard Road is excellently located for transport links with Shepherd's Bush Market station just a three-minute walk away. Outstanding local schools, Westfield Shopping Centre and major road connections are all close at hand.





Total area (approx.): 199.1 sq. m (2143.1 sq. ft)
(Excluding Eaves)

Marsh & Parsons Brook Green

107-109 Shepherds Bush
Road, London, W6 7LP
020 7605 7765

We aim to make our particulars both accurate and reliable. However, they are not guaranteed; nor do they form part of an offer or contract. If you require clarification on any points then please contact us, especially if you're traveling some distance to view. Please note that appliances and heating systems have not been tested and therefore no warranties can be given as to their good working order.