

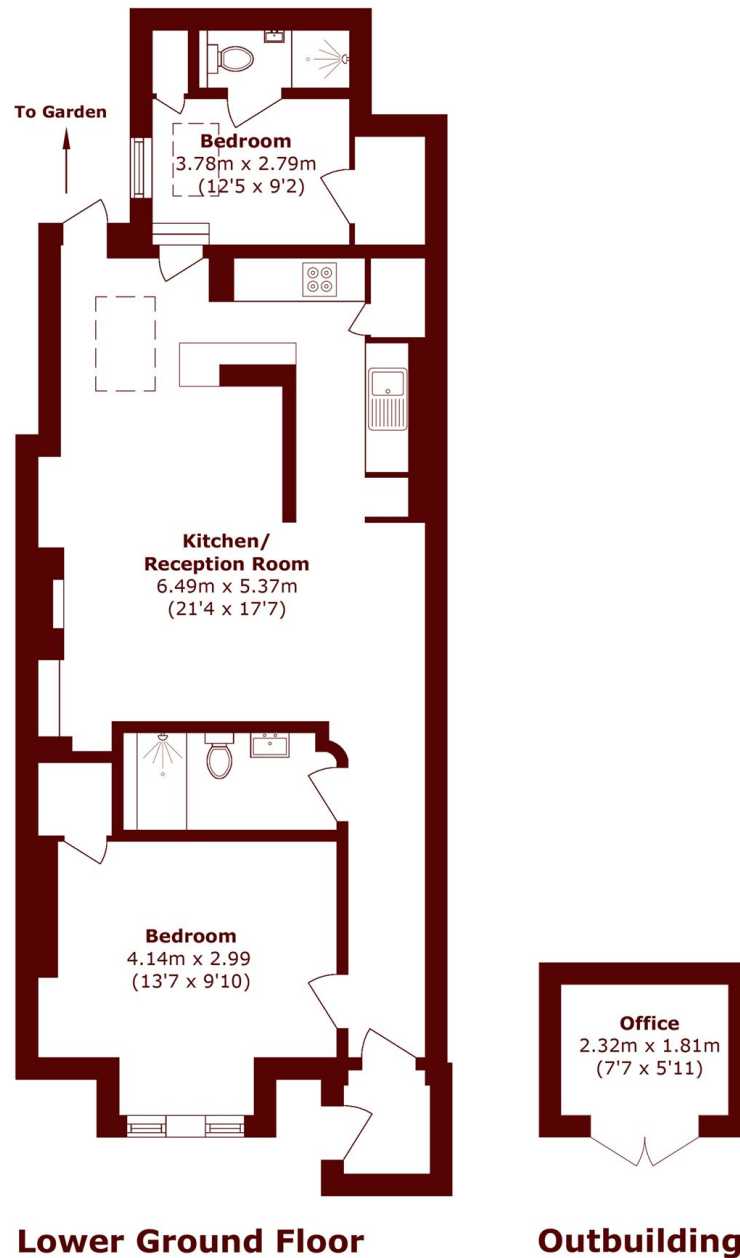


Loftus Road, W12

£710,000

2 2 1 C

- Two Bedrooms
- Two Bathrooms
- Private Garden
- Modern Finish
- Lower Ground Floor
- Westfield Shopping Centre



Total area (approx.): 76.5 sq. m (823.4 sq. ft)

Marsh & Parsons Brook Green

107-109 Shepherds Bush
Road, London, W6 7LP
020 7605 7765