



Brackenbury Road, W6

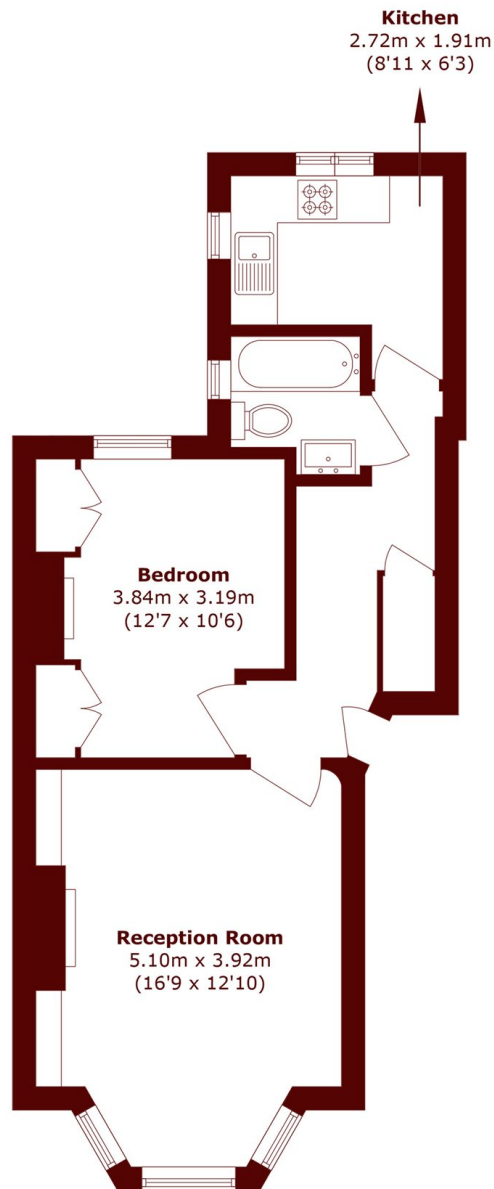
£525,000



- One Bedroom
- Raised Ground Floor

- High Ceilings
- Lots Of Character

- No Onwards Chain
- Share Of Freehold



Total area (approx.): 47.5 sq. m (511.3 sq. ft)

Marsh & Parsons Brook Green

107-109 Shepherds Bush
Road, London, W6 7LP
020 7605 7765