



Milles Square, SW9

£375,000



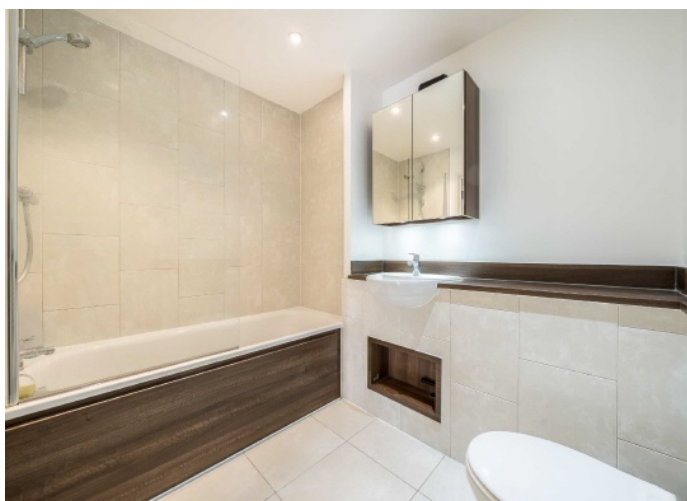
- One Double Bedroom
- Juliette Balcony
- Central Location
- Chain Free
- Secure Development
- Long Lease





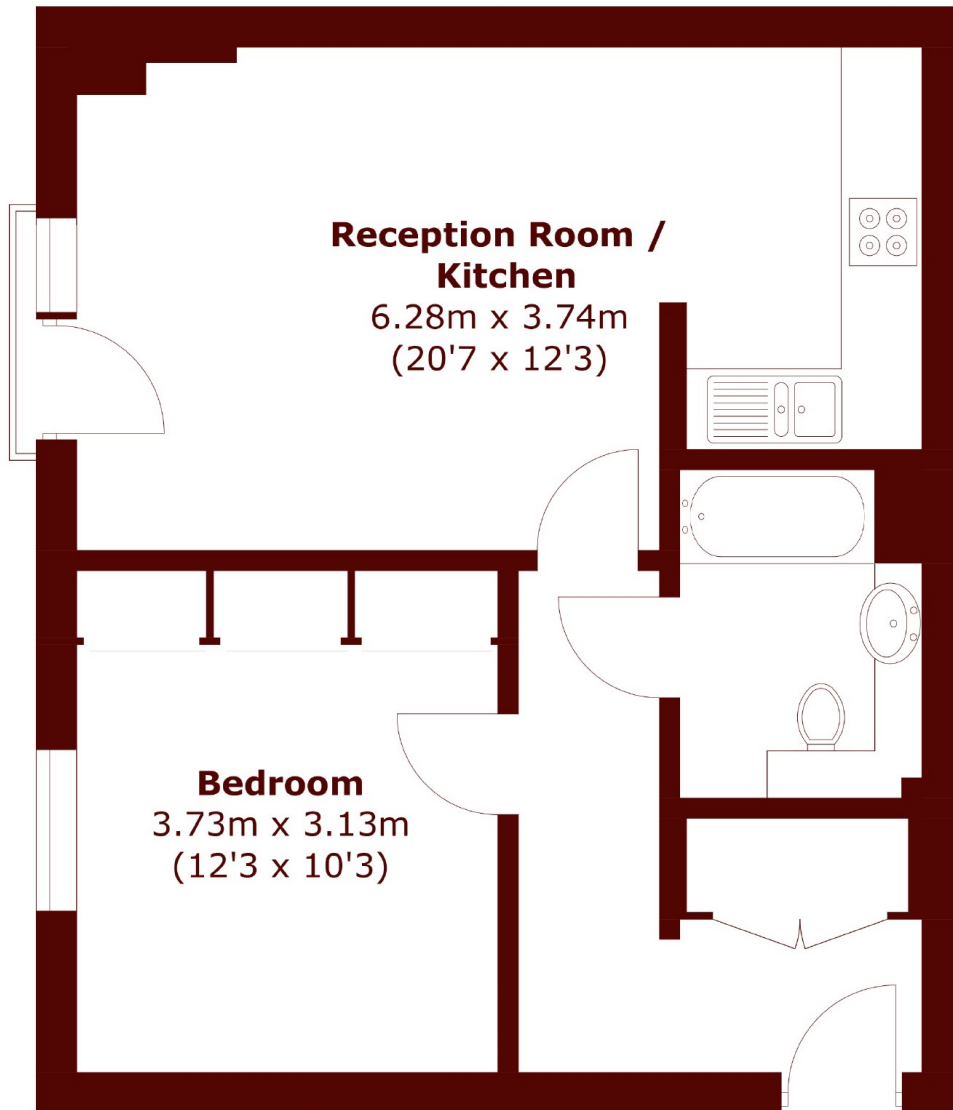
ABOUT THE PROPERTY

Located on the first floor of a secure and gated development which benefits from a concierge, secure entry, bike storage and lift access, this modern one bedroom flat spanning over 500 sqft is in fantastic decorative order. The open plan entertaining space is filled with natural light from the Juliette balcony with plenty of space for dining and a fully equipped kitchen.



Located in the heart of Brixton and close to the vast array of independent shops, cafes, restaurants and bars including the popular Brixton Village with easy access to Central London via Brixton Underground (Victoria Line) and Brixton Overground Station.





First Floor

Total area (approx.): 48.1 sq. m (517.7 sq. ft)

Marsh & Parsons Brixton
400-402 Coldharbour Lane,
London, SW9 8LF
020 7733 4595

We aim to make our particulars both accurate and reliable. However, they are not guaranteed; nor do they form part of an offer or contract. If you require clarification on any points then please contact us, especially if you're traveling some distance to view. Please note that appliances and heating systems have not been tested and therefore no warranties can be given as to their good working order.