



Ferndale Road, SW4

£850,000



- Two Double Bedrooms
- Split Level

- Large Private Terrace
- Chain Free

- Penthouse Apartment
- 900+ Year Lease





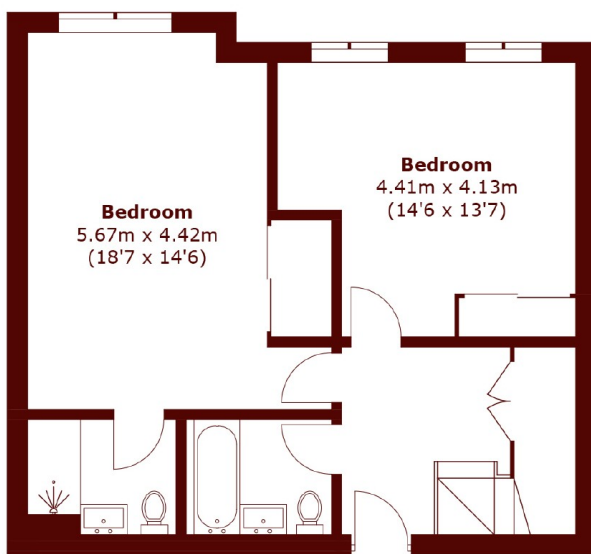
ABOUT THE PROPERTY

A stunning split level penthouse set across the second and third floors of a school conversion spanning over 1,200 sq ft boasting incredible proportions and stylish modern living throughout offering two generous double bedrooms, two bathrooms and an incredible open plan kitchen-reception with a large private terrace with exceptional views. Offered to the market chain free.

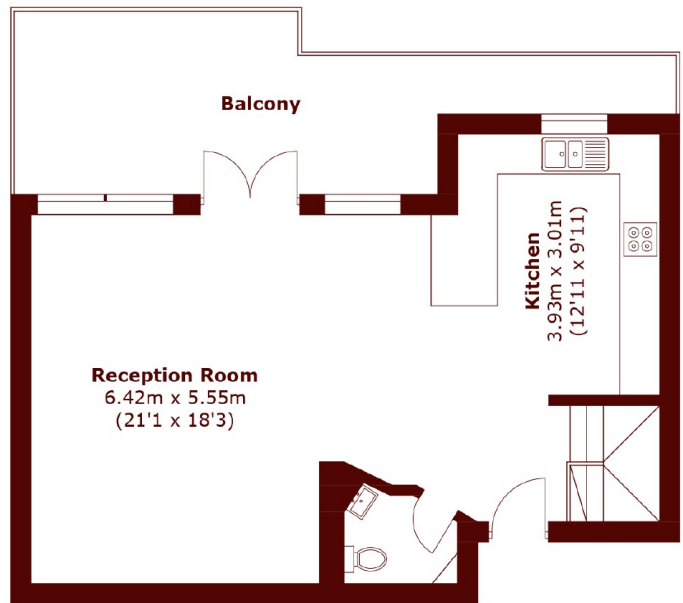
The spacious and bright open plan kitchen-reception area on the upper level benefits from high ceilings, floor-to-ceiling windows, large double doors leading out to a private terrace with spectacular views over town and a bespoke fitted kitchen with a large breakfast bar, integrated appliances, solid worktops and ample storage. A separate w/c is also located on this level. Downstairs, the property features two well proportioned double bedrooms, the primary benefitting from an en-suite as well as a separate modern three piece family bathroom.

Stafford Mansions is ideally located between the excellent transport links of Brixton Tube (Victoria Line) and Clapham North (Northern Line) and within easy walking distance to the green open space of Clapham Common alongside the vast array of independent cafes, shops, restaurants and bars of Brixton and Clapham High Street.





Second Floor



Third Floor

Total area (approx.): 113.7 sq. m (1,223.8 sq. ft)
Balcony: 19.3 sq. m (207.7 sq. ft)

Marsh & Parsons Brixton
400-402 Coldharbour Lane,
London, SW9 8LF
020 7733 4595

We aim to make our particulars both accurate and reliable. However, they are not guaranteed; nor do they form part of an offer or contract. If you require clarification on any points then please contact us, especially if you're traveling some distance to view. Please note that appliances and heating systems have not been tested and therefore no warranties can be given as to their good working order.