



Thornbury Road, SW2

£600,000



- Two Double Bedrooms
- Two Bathrooms
- Share Of Freehold
- Superb Condition
- Period Property
- Split Level





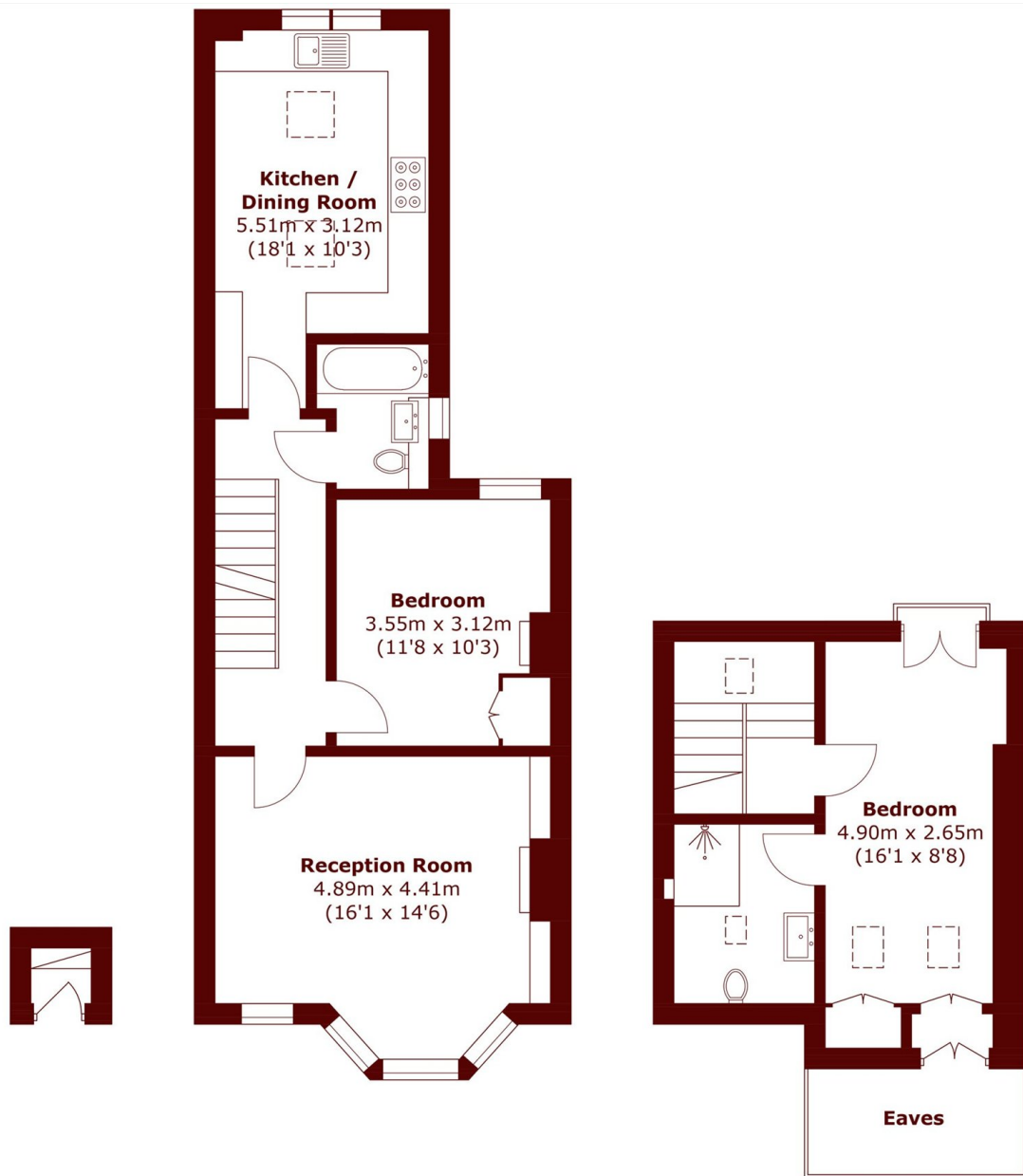
ABOUT THE PROPERTY

A superb example of a split level flat set over the first and second floors of a beautiful period building spanning 938 sq ft comprising two double bedrooms, two bathrooms, an impressive reception room and a generous kitchen alongside a share of the freehold.

Over the first floor a stunning reception room spans the full width of the front of the building with a large bay window, feature fireplace and bespoke cabinetry flanking the chimney breast. A double bedroom and modern family bathroom alongside a newly fitted eat-in kitchen with ample wall and base units, solid worktops and integrated appliances are also located on this level. The top floor boasts a spacious primary bedroom with a modern en-suite bathroom, a juliet balcony and bespoke built-in wardrobes.

Thornbury Road is a popular residential street nestled between Abbeville Village and Brixton Hill boasting a vast array of independent shops, cafes, bars and restaurants. The open green spaces of Clapham Common and Brockwell Park are close by alongside the excellent transport links of Clapham South Tube (Northern Line), Brixton Tube (Victoria Line) and Streatham Hill Overground Station as well as multiple bus routes offering direct access into central London.





Ground Floor

First Floor

Second Floor

Total area (approx.): 87.1 sq. m (937.5 sq. ft)
(Excluding Eaves)

Marsh & Parsons Brixton
400-402 Coldharbour Lane,
London, SW9 8LF
020 7733 4595

We aim to make our particulars both accurate and reliable. However, they are not guaranteed; nor do they form part of an offer or contract. If you require clarification on any points then please contact us, especially if you're traveling some distance to view. Please note that appliances and heating systems have not been tested and therefore no warranties can be given as to their good working order.