

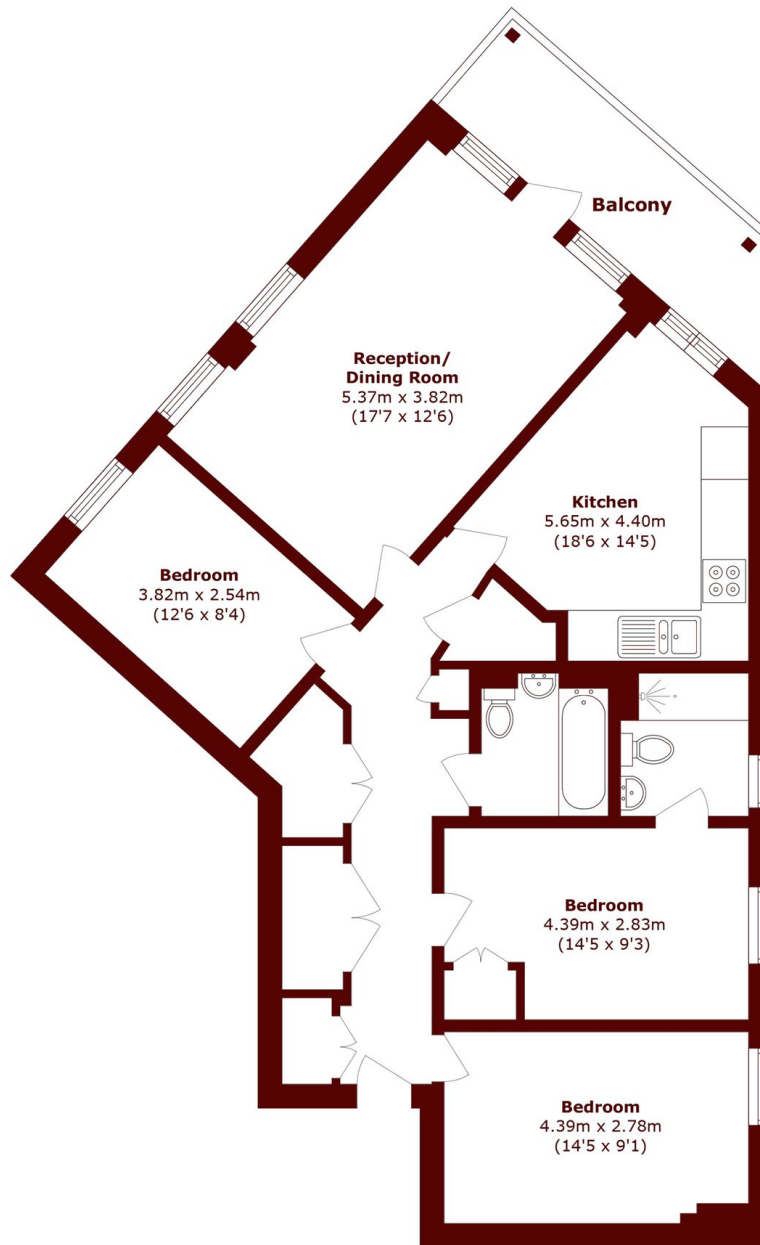


## Loughborough Park, SW9

£599,950



- Three Double Bedrooms
- Two Bathrooms
- Large Private Balcony
- Plentiful Storage
- Well Maintained
- Bike Storage



Total area (approx.): 90.1 sq. m (969.8 sq. ft)

Balcony area (approx.): 10.7 sq. m (115.1 sq. ft)

## Marsh & Parsons Brixton

400-402 Coldharbour Lane,  
London, SW9 8LF  
020 7733 4595

We aim to make our particulars both accurate and reliable. However, they are not guaranteed; nor do they form part of an offer or contract. If you require clarification on any points then please contact us, especially if you're traveling some distance to view. Please note that appliances and heating systems have not been tested and therefore no warranties can be given as to their good working order.