



## Lambert Road, SW2

£400,000



- Stylish Kitchen
- Chain Free
- Modern Apartment
- Large Separate Reception Room
- Two Double Bedrooms
- Convenient Location





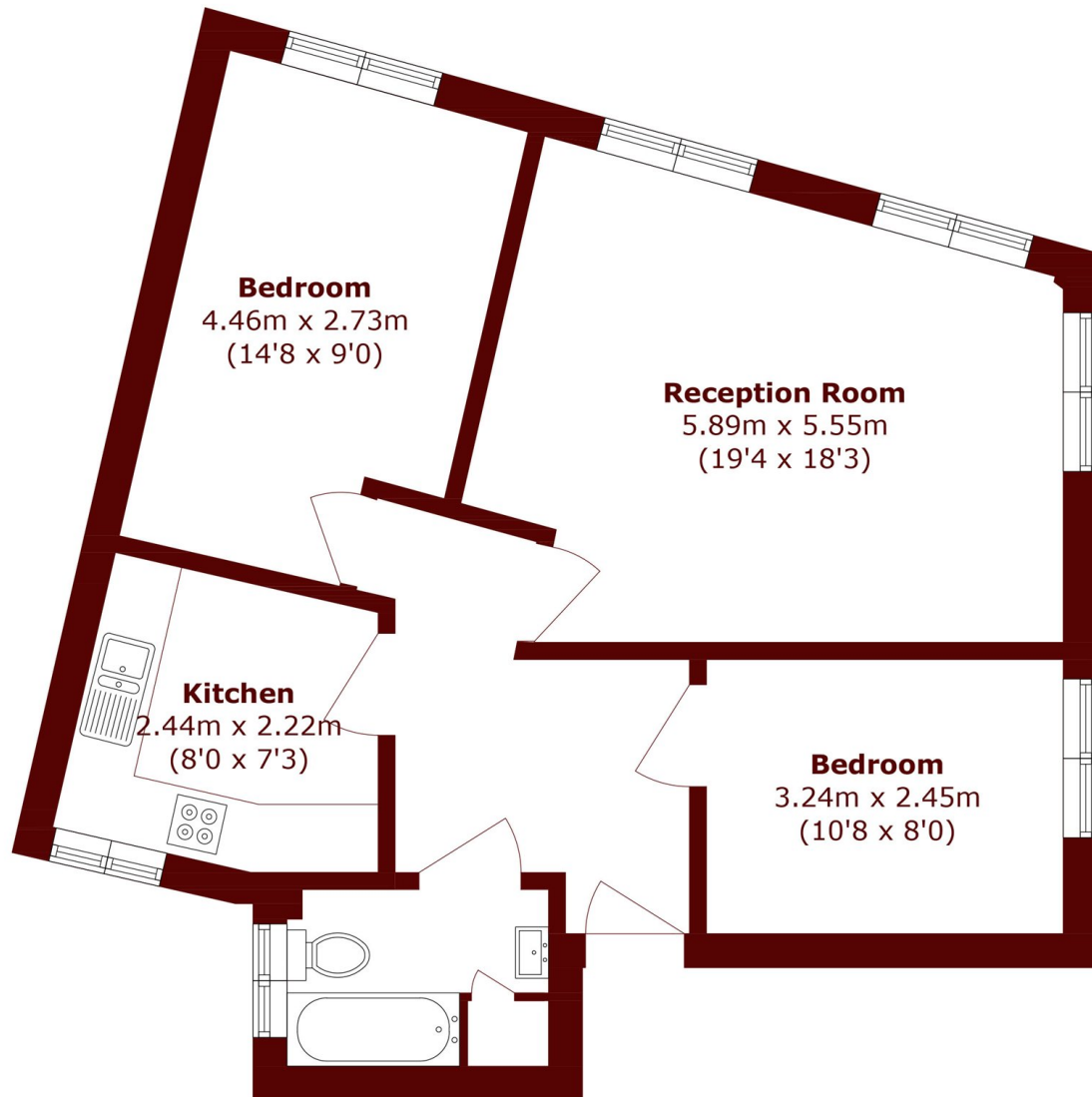


## ABOUT THE PROPERTY

A stylish two bedroom apartment, in the heart of Brixton finished to an exacting standard throughout with a generous footprint spanning 613 sqft. The property is in excellent condition throughout and accommodation comprises two double bedrooms, a family bathroom, a separate living room and a separate fitted kitchen. The property is also being sold chain free.

Lambert Road is a calm, residential street which is very popular for its beautiful buildings and proximity to local amenities. The road is within comfortable walking distance to many desirable cafés, restaurants, and local bars, whilst within catchment of two of Brixton's most sought-after primary schools; Sudbourne School and Corpus Christi Primary School (Ofsted rated Outstanding).





Total area (approx.): 58.1 sq. m (625.3 sq. ft)

**Marsh & Parsons Brixton**  
400-402 Coldharbour Lane,  
London, SW9 8LF  
020 7733 4595

We aim to make our particulars both accurate and reliable. However, they are not guaranteed; nor do they form part of an offer or contract. If you require clarification on any points then please contact us, especially if you're traveling some distance to view. Please note that appliances and heating systems have not been tested and therefore no warranties can be given as to their good working order.