



Brixton Road, SW9

£450,000



- Stylish Open Plan Kitchen/Living Area
- Two Double Bedrooms
- 975 Year Lease
- Chain Free
- Air Conditioning Throughout
- Large Communal Terrace





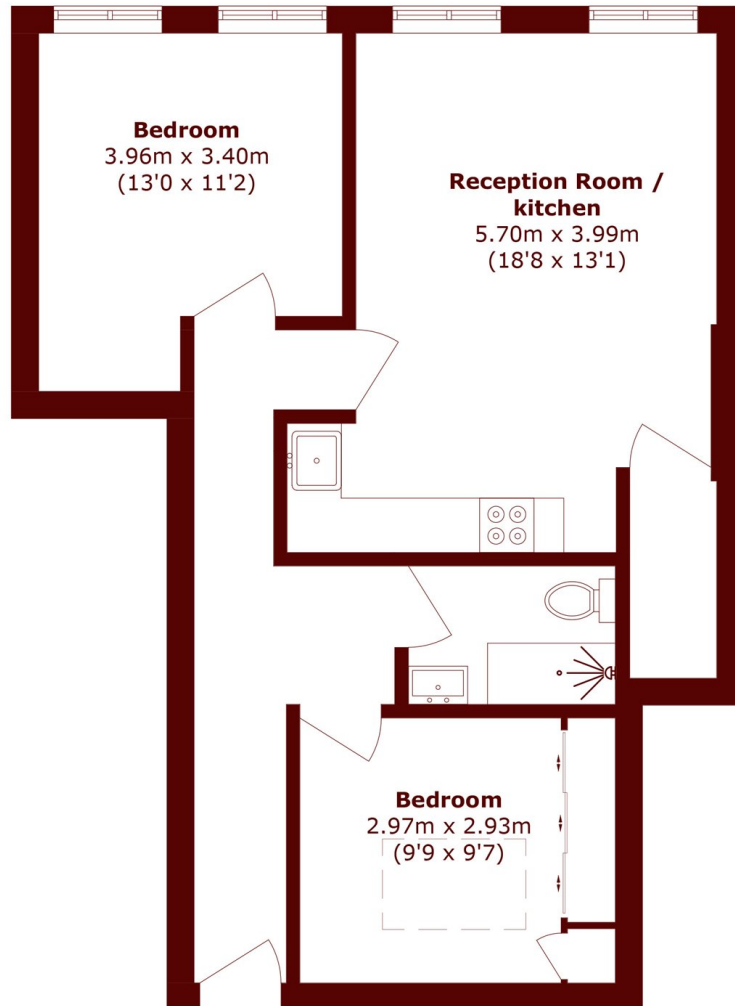
ABOUT THE PROPERTY

A stylish two bedroom apartment, in the heart of Brixton finished to an impeccable standard throughout with a generous footprint spanning 685 sqft. The property is in excellent condition with accommodation comprising two double bedrooms, a family bathroom and a generous open plan kitchen and living space. The property also benefits from an incredible communal roof terrace, fitted with outdoor furniture and benches, air conditioning throughout and a 975 year lease. The property is being sold chain free.



Brixton Road is located in the heart of Brixton moments from the vast array of independent shops, cafes and restaurants including the popular Brixton Village with easy access to the excellent transport links of Brixton Underground Tube (Victoria Line) and Overground with direct links into central London.





Total area (approx.): 63.7 sq. m (685.6 sq. ft)

Marsh & Parsons Brixton
400-402 Coldharbour Lane,
London, SW9 8LF
020 7733 4595

We aim to make our particulars both accurate and reliable. However, they are not guaranteed; nor do they form part of an offer or contract. If you require clarification on any points then please contact us, especially if you're traveling some distance to view. Please note that appliances and heating systems have not been tested and therefore no warranties can be given as to their good working order.