



## Loughborough Road, SW9

£550,000



- Two Double Bedrooms
- Private South Facing Garden
- Split Level
- Utility Room
- Own Front Door
- Period Property







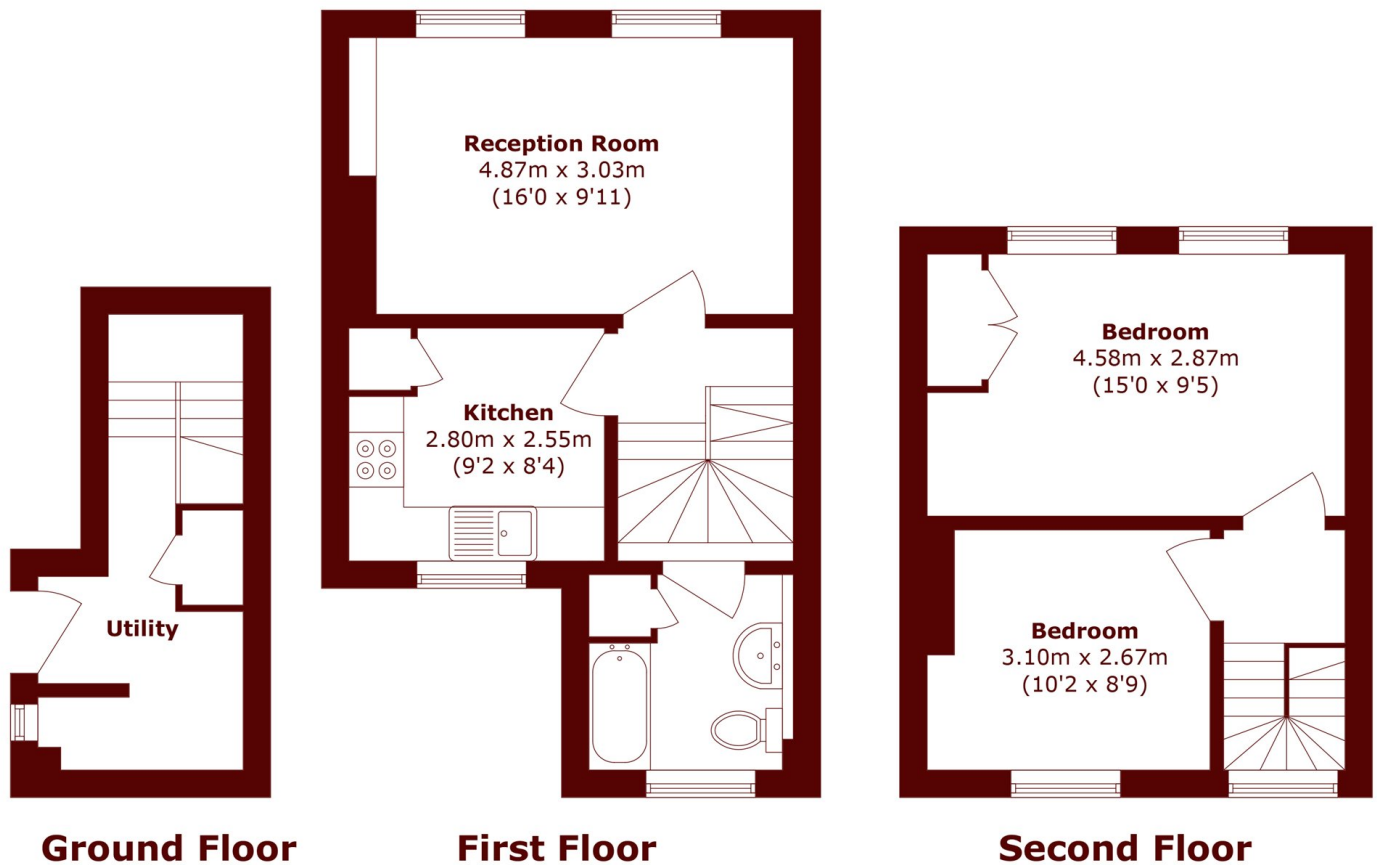
## ABOUT THE PROPERTY

**\*Offers In Excess Of\*** Set over three floors and spanning 730 sqft the property boasts two double bedrooms, a generous and bright reception room, a fitted-kitchen with ample base and wall units and a three piece family bathroom. The property further benefits from its own front door, a downstairs utility space and a superb private south facing patio garden with exposed brick walls and mature olive trees.



Loughborough Road is located nearby the excellent transport links of Loughborough Junction and Brixton Tube (Victoria Line) alongside the open green spaces of Myatt's Fields Park and the vast array of local boutique shops, cafés, bars and restaurants.





Total area (approx.): 67.8 sq. m (729.7 sq. ft)

**Marsh & Parsons Brixton**  
400-402 Coldharbour Lane,  
London, SW9 8LF  
020 7733 4595

We aim to make our particulars both accurate and reliable. However, they are not guaranteed; nor do they form part of an offer or contract. If you require clarification on any points then please contact us, especially if you're traveling some distance to view. Please note that appliances and heating systems have not been tested and therefore no warranties can be given as to their good working order.