



Railton Road, SE24

£515,000



- Two Double Bedrooms
- Close To Transport
- Bright & Airy
- Split Level
- Superb Condition
- Over 700 Sqft





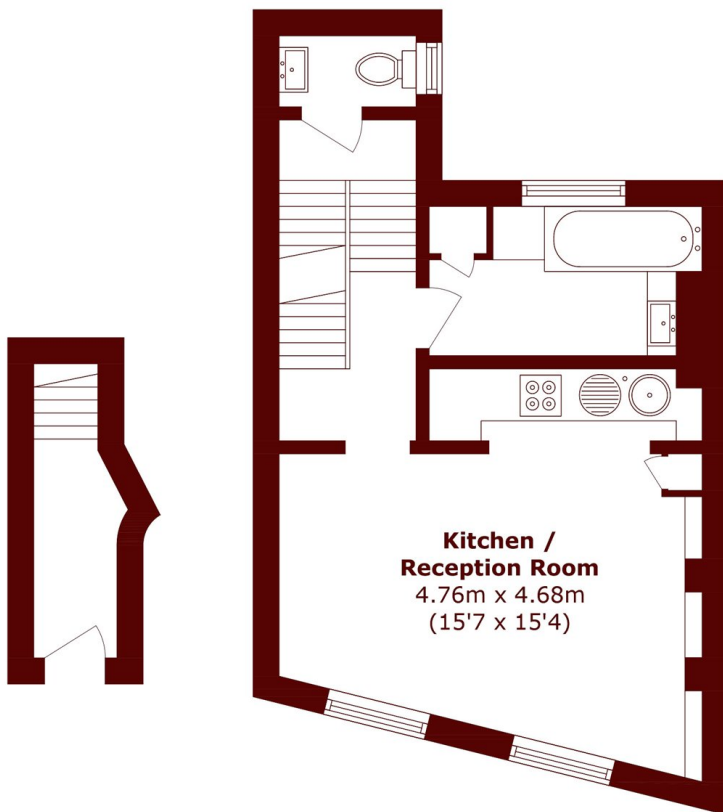
ABOUT THE PROPERTY

A charming two double bedroom split-level maisonette set over the first and second floors of a period property. Entering through your own front door and offering approximately 700 sqft of well-planned living space the flat boasts a bright and spacious open-plan kitchen/reception/dining room on the first floor alongside a family bathroom and W/C. Upstairs, the second floor comprises two generous double bedrooms.

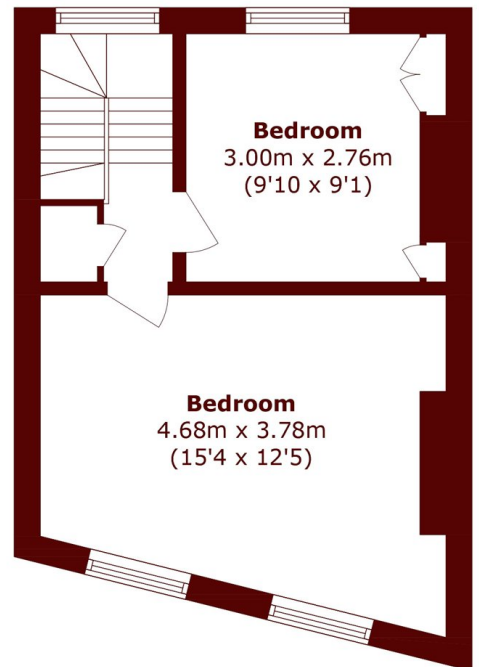


Nestled between Brixton and Herne Hill, Railton Road benefits from a community-focused atmosphere. The area is well-known for its independent cafes, local shops, and proximity to the green open spaces of Brockwell Park. Herne Hill Station is just a short walk away, offering fast and convenient links to Central London, while nearby Brixton provides access to the Victoria Line and an eclectic mix of shops, bars and restaurants.





Ground Floor



Second Floor

First Floor

Total area (approx.): 65.3 sq. m (702.8 sq. ft)

Marsh & Parsons Brixton
400-402 Coldharbour Lane,
London, SW9 8LF
020 7733 4595

We aim to make our particulars both accurate and reliable. However, they are not guaranteed; nor do they form part of an offer or contract. If you require clarification on any points then please contact us, especially if you're traveling some distance to view. Please note that appliances and heating systems have not been tested and therefore no warranties can be given as to their good working order.