



St. Pauls Crescent, NW1

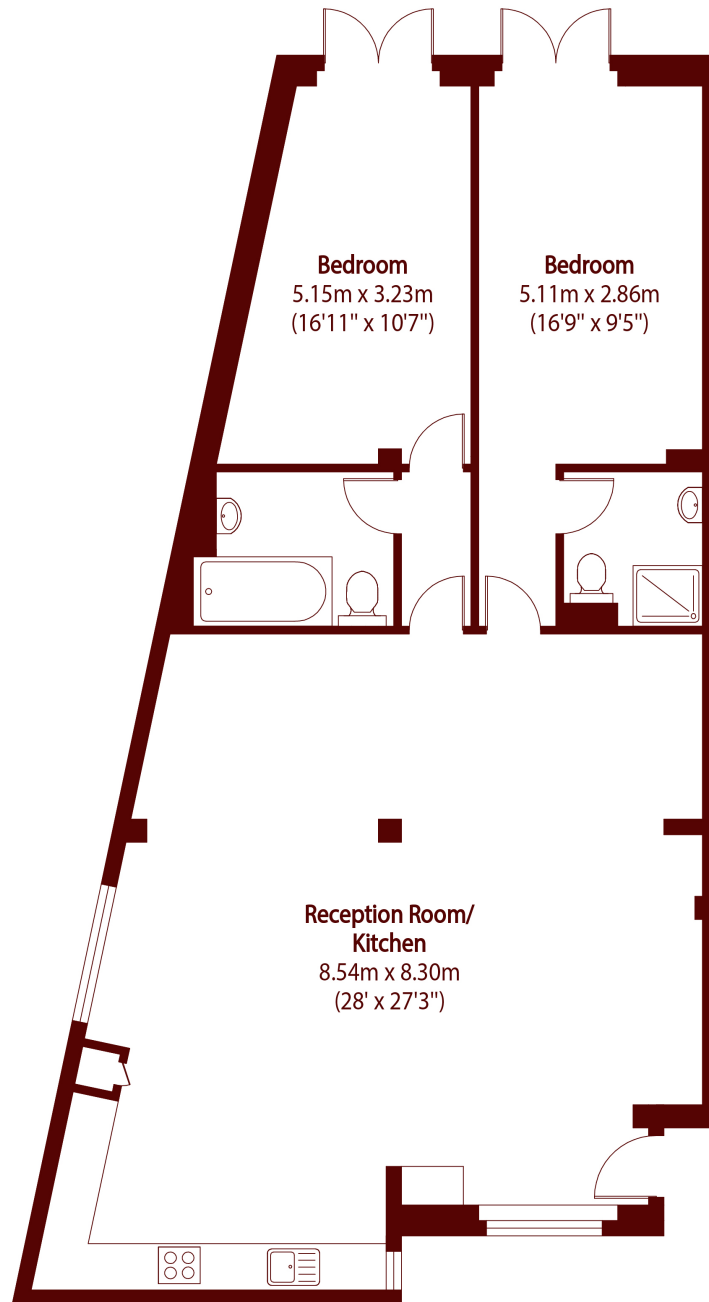
£750,000



- Two double bedrooms
- Two bathrooms

- Secure gated Entry
- Close to Kings Cross

- Chain Free
- Warehouse Conversion



Total area (approx): 104.98 sq m (1130 sq. ft)

Marsh & Parsons Camden

27 Parkway, London, NW1
7PN
020 7244 2200