



Herbert Street, NW5

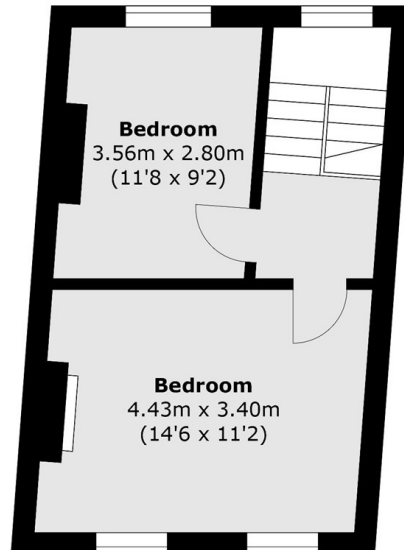
£1,350,000



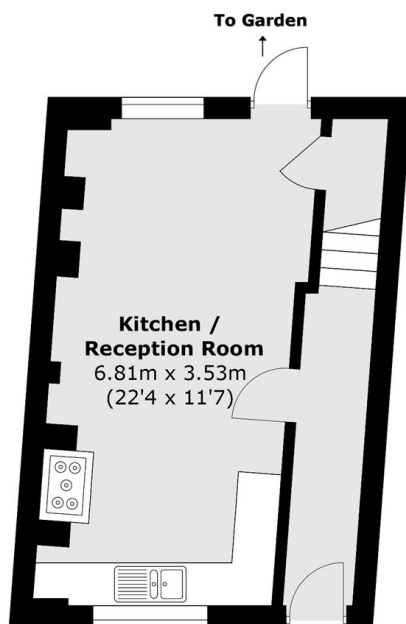
- Three Bedrooms
- No Onward Chain

- Family Bathroom
- South Facing Rear Garden

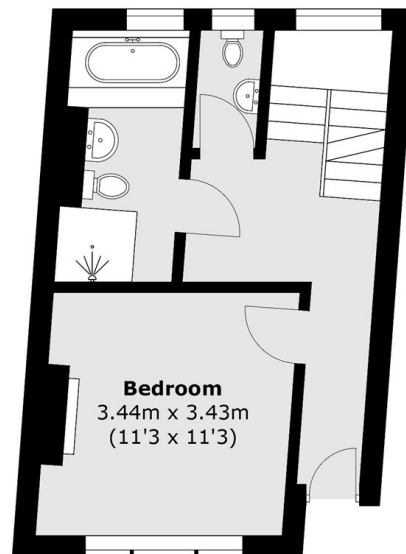
- Close to Amenities
- Open Plan Kitchen



First Floor



Lower Ground Floor



Raised Ground Floor

Total area (approx.): 93.5 sq. m (1,006.4 sq. ft)

Marsh & Parsons Camden

27 Parkway, London, NW1

7PN

020 7244 2200