



Albert Street, NW1

£600,000



- Long Lease
- Close to Regents Park
- Private Underground Parking
- Chain Free
- Great Condition
- Two Bathrooms

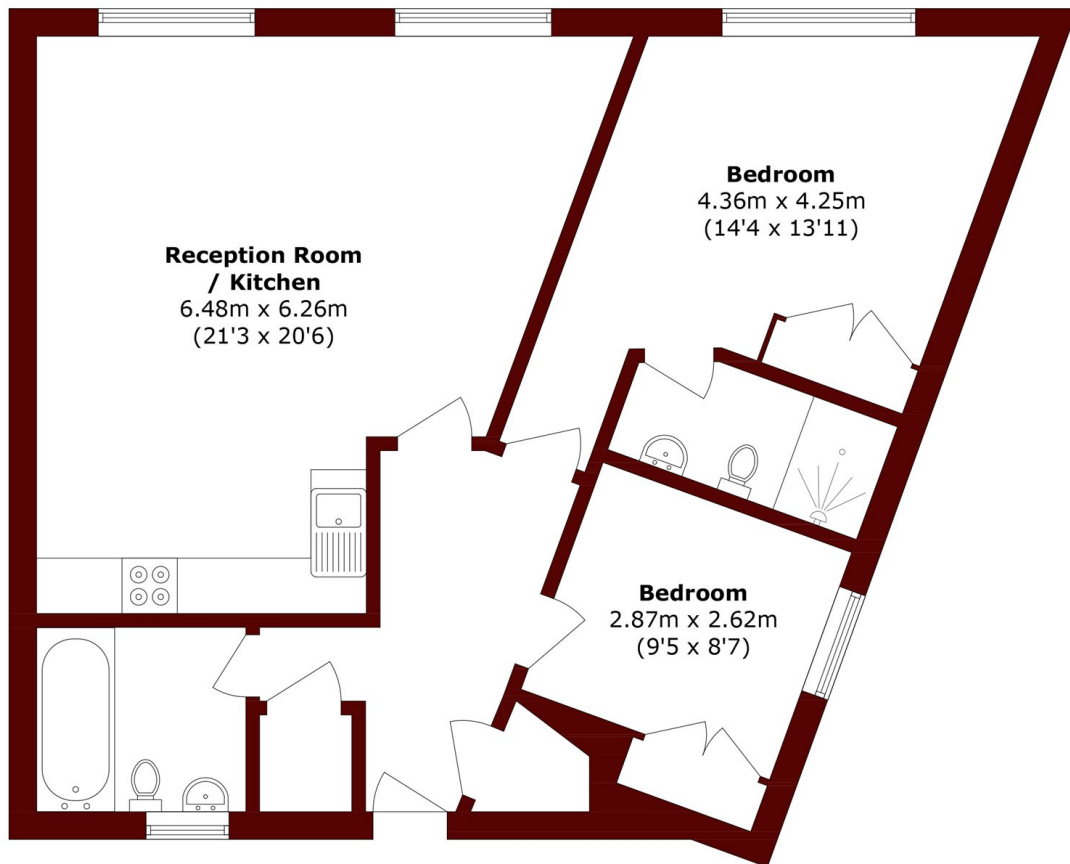


ABOUT THE PROPERTY

This stylish, chain-free two-bedroom, two-bathroom apartment in the heart of Camden Town offers 896 sq ft of modern living, featuring an open-plan reception room, and secure underground parking with EV charging.

Moments from Regent's Park and central Camden Town, Atlantic House also sits near King's Cross and Kentish Town for great food, bars, and culture. Transport is excellent, with rapid links via Camden Town, Camden Road, and King's Cross/St Pancras.





Total area (approx.): 78.4 sq. m (843.8 sq. ft)

Marsh & Parsons Camden

27 Parkway, London, NW1

7PN

020 7244 2200