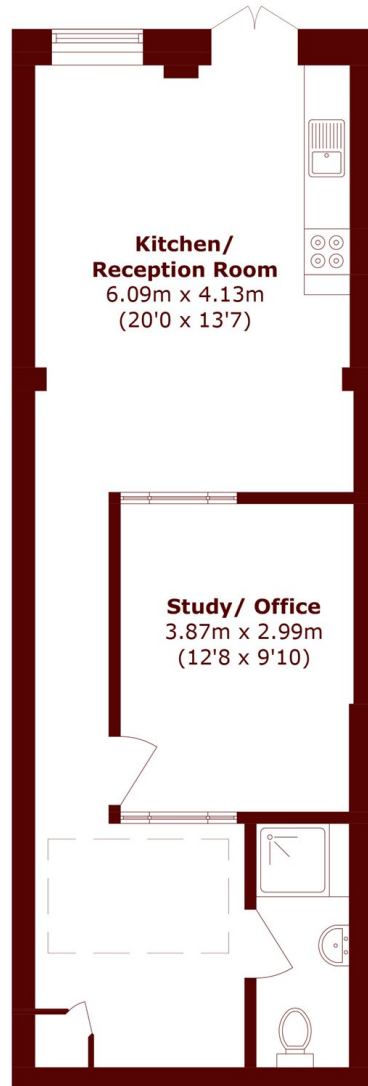


Camden Road, NW1

£395,000



- Spacious Apartment
- No Onward Chain
- Office Space
- Recently Renovated
- Low Running Costs
- Close to Amenities



Total area (approx.): 55.6 sq. m (598.5 sq. ft)

Marsh & Parsons Camden

27 Parkway, London, NW1

7PN

020 7244 2200