



Georgiana Street, NW1

£2,750 pcm



- Two Bedroom
- Split Level Conversion

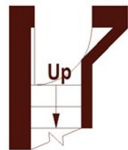
- Modern Finish
- Ample Storage

- Period Features
- Open Plan

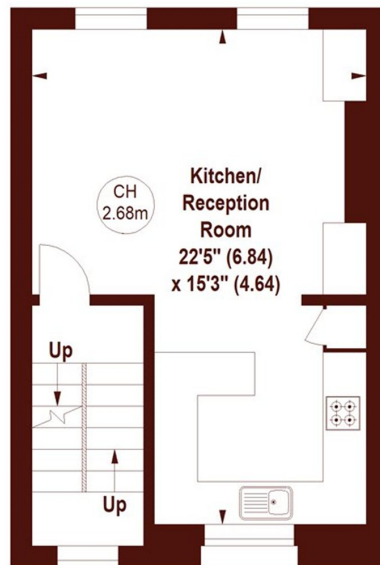
Georgiana Street, NW1

APPROX. GROSS INTERNAL FLOOR AREA 756 SQFT / 70.23 SQM

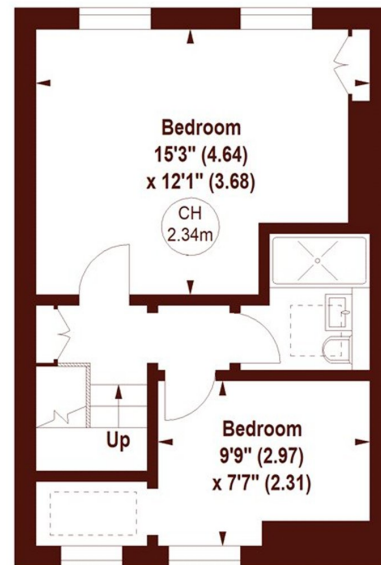
Key :
CH - Ceiling Height



GROUND FLOOR
ENTRANCE



FIRST FLOOR



SECOND FLOOR

Not to scale, for guidance only and must not be relied upon as a statement of fact.
All measurements and areas are approximate only

Marsh & Parsons Camden

27 Parkway, London, NW1
7PN
020 7244 2200