



## Bayham Street, NW1

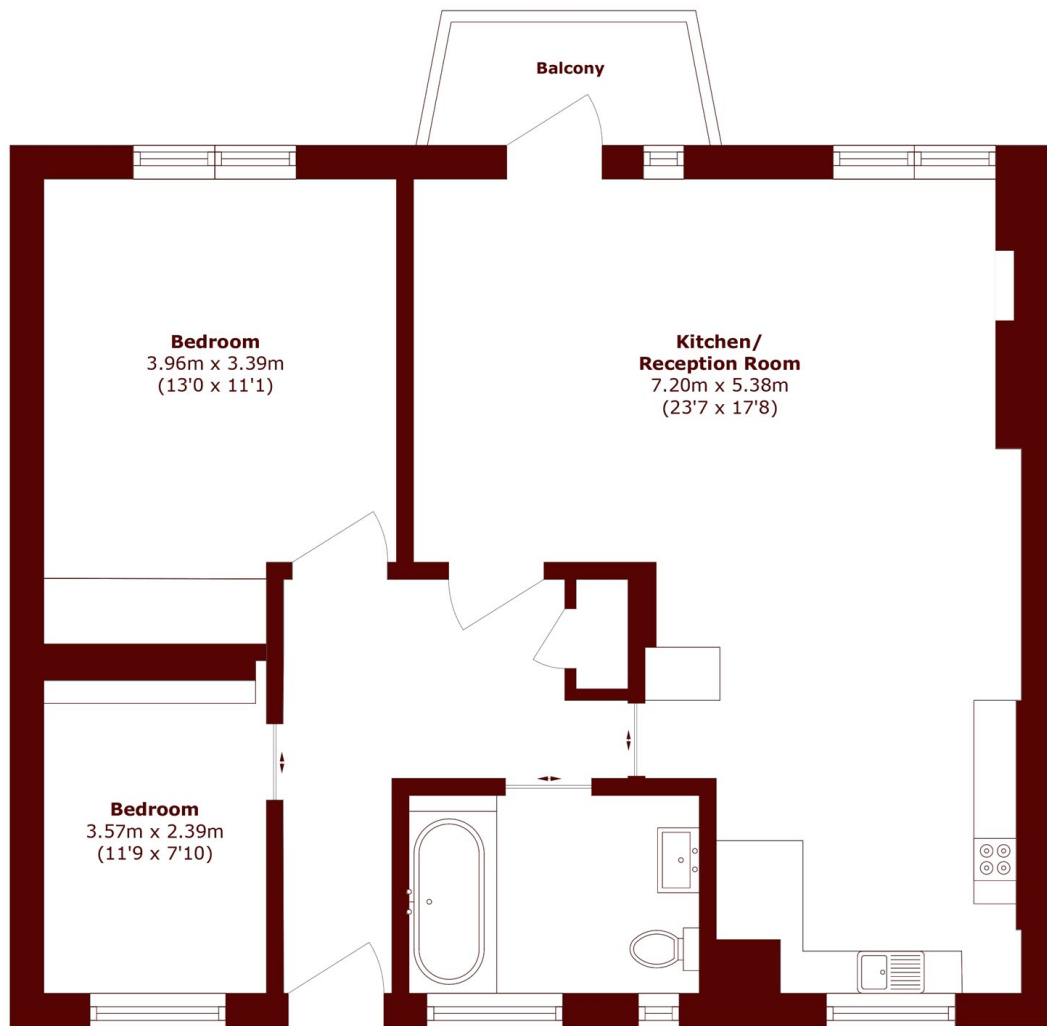
£2,500 pcm



- Two Bedrooms
- Built-in Storage

- Lift Access
- Open Plan Kitchen

- Communal Gardens
- Balcony



Total area (approx.): 62.2 sq. m (669.5 sq. ft)  
Balcony area (approx.): 2.49 sq. m (26.8 sq. ft)

## Marsh & Parsons Camden

27 Parkway, London, NW1  
7PN  
020 7244 2200