



Nofax House, SW4

£400,000

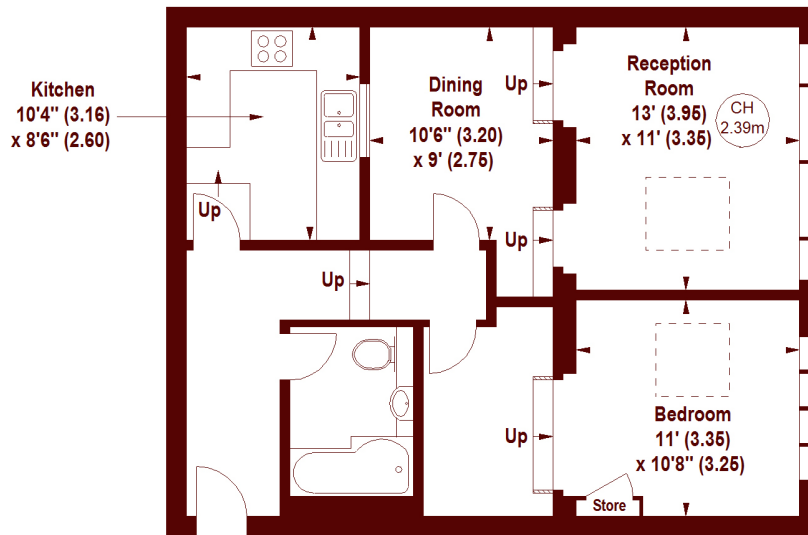
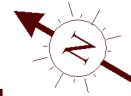


- Large one-bedroom flat
- Secure gated development
- Close to transport and amenities
- Grade II listed Georgian building
- Central Clapham location
- Chain free

Nofax House, SW4

APPROX. GROSS INTERNAL FLOOR AREA 728 SQFT / 67.63 SQM

Key :
CH - Ceiling Height



RAISED GROUND FLOOR

The floor plan is not to scale and measurements and areas shown are approximate and therefore should be used for illustrative purposes only. The plan has been prepared in accordance with the RICS code of Measuring Practice and whilst we have confidence in the information produced, it must not be relied on. If there is any aspect of particular importance, you should carry out or commission your own inspection of the property.
Copyright of FeaturePRO.

Marsh & Parsons Clapham

28 Old Town, London, SW4
OLB
020 7501 3666