



Plato Road, SW2

£650,000

2 2 1 C

- Victorian upper maisonette
- Fully modernised
- Stylish interiors
- Fitted wardrobes in principle
- Excellent transport links
- Close to Clapham Common



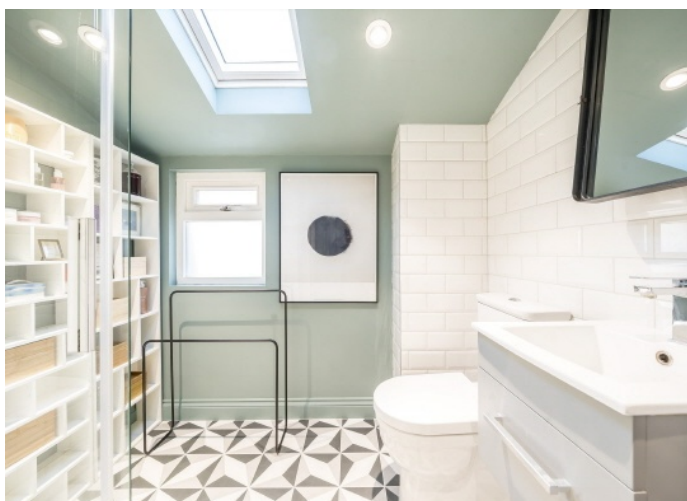


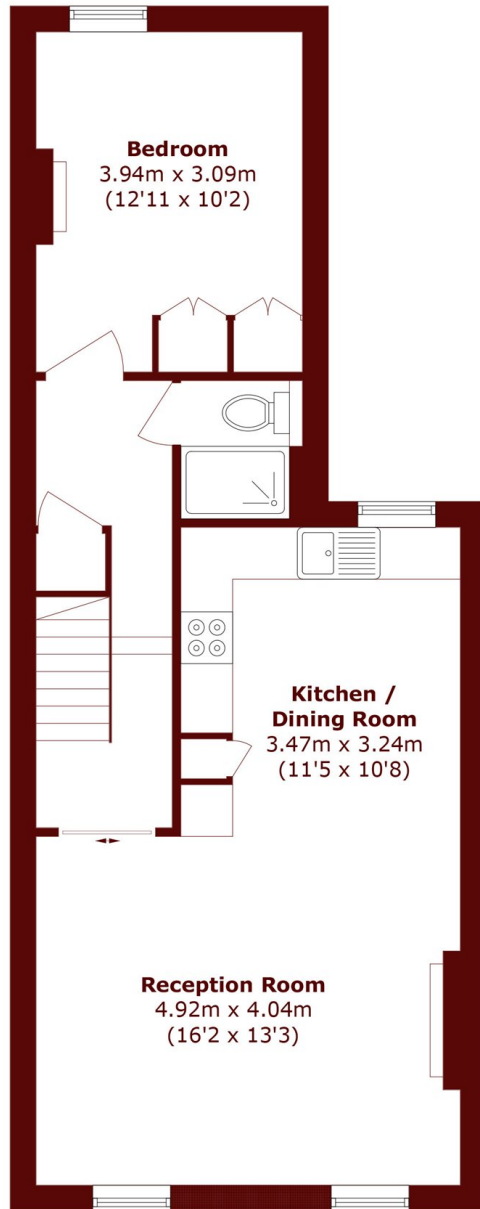
ABOUT THE PROPERTY

A beautifully modernised Victorian upper maisonette extending to over 814 sq ft, featuring two double bedrooms, two bathrooms and offered chain free.

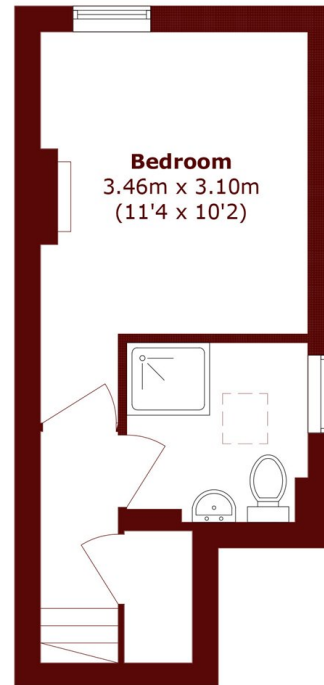
This bright and spacious property was taken back to brick and comprehensively refurbished by the current owner, who opened up the living and kitchen space, making it an ideal first-time purchase.

Plato Road is a popular residential street, just a short walk from the vibrant amenities of Clapham High Street and Brixton, as well as the open green spaces of Clapham Common. Excellent transport links are close by, with direct access to both the Northern and Victoria Lines at Clapham North and Brixton respectively, providing swift connections to the City and beyond.





First Floor



Second Floor

Total area (approx.): 75.7 sq. m (814.8 sq. ft)

Marsh & Parsons Clapham
28 Old Town, London, SW4
OLB
020 7501 3666

We aim to make our particulars both accurate and reliable. However, they are not guaranteed; nor do they form part of an offer or contract. If you require clarification on any points then please contact us, especially if you're traveling some distance to view. Please note that appliances and heating systems have not been tested and therefore no warranties can be given as to their good working order.