



Killyon Terrace, SW8

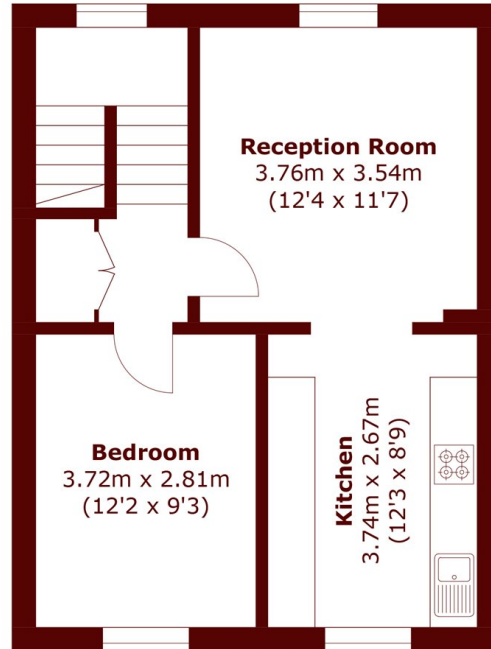
£450,000



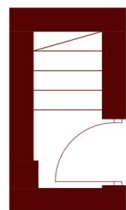
- Upper Victorian Maisonette
- Well-presented throughout

- 149 year lease
- Large loft space (not demised)

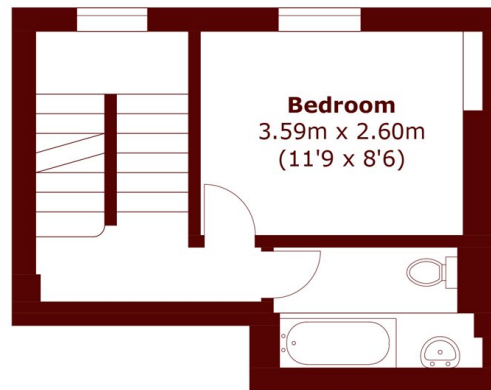
- Close to Clapham Old Town
- 720 sq ft



Second Floor



Ground Floor



First Floor

Total area (approx.): 66.9 sq. m (720.0 sq. ft)

Marsh & Parsons Clapham

28 Old Town, London, SW4

OLB

020 7501 3666