



## Surrey Crescent, W4

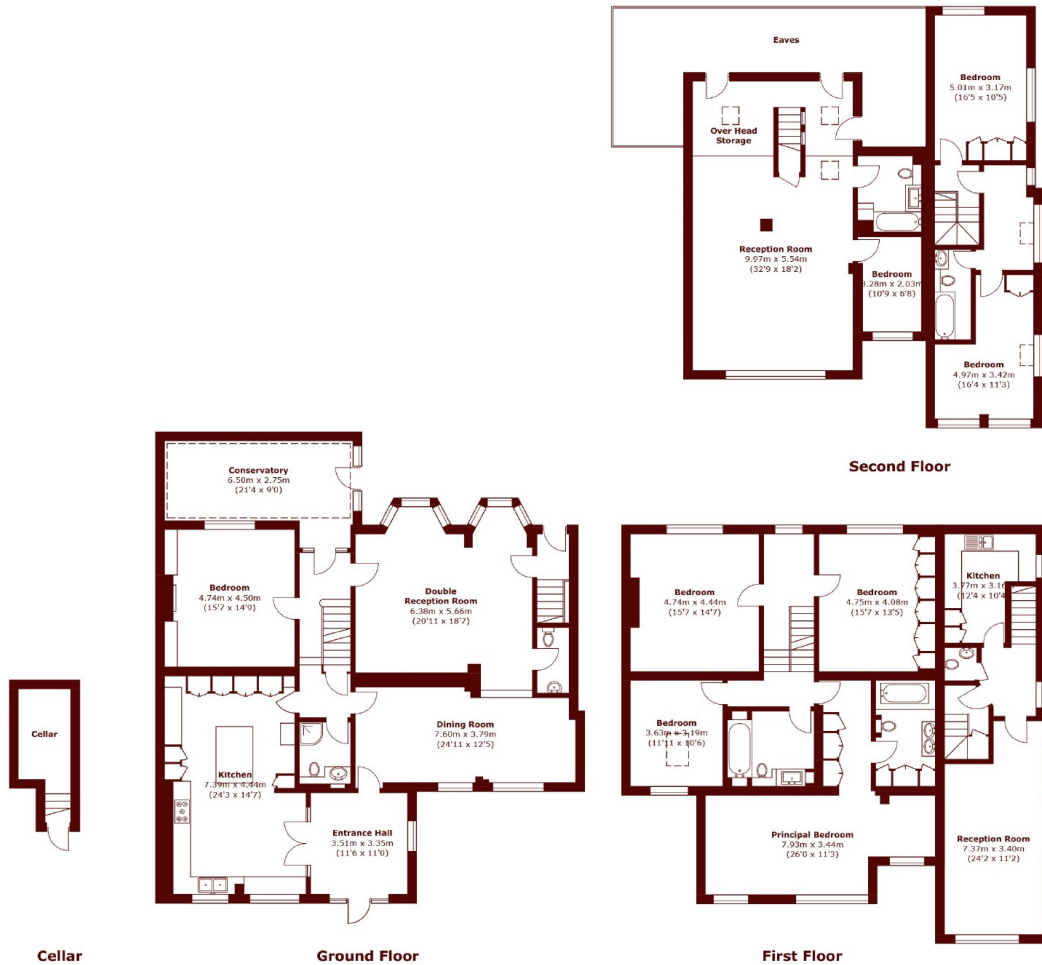
£2,750,000

 6  5  3  C

• Six Bedroom Separate

• Two Bedroom Annexe

• Off Street Parking



Total area (approx.): 439.3 sq. m (4,728.5 sq. ft)  
 (Excluding Cellar, Eaves & Over Head Storage)  
 Eaves & Over Head Storage: 53.6 sq. m (576.9 sq. ft)  
 Cellar (approx.): 7.1 sq. m (76.4 sq. ft)

## Marsh & Parsons Chiswick

34-38 Turnham Green  
 Terrace, London, W4 1QP  
 020 8994 2556