



Saville Road, W4

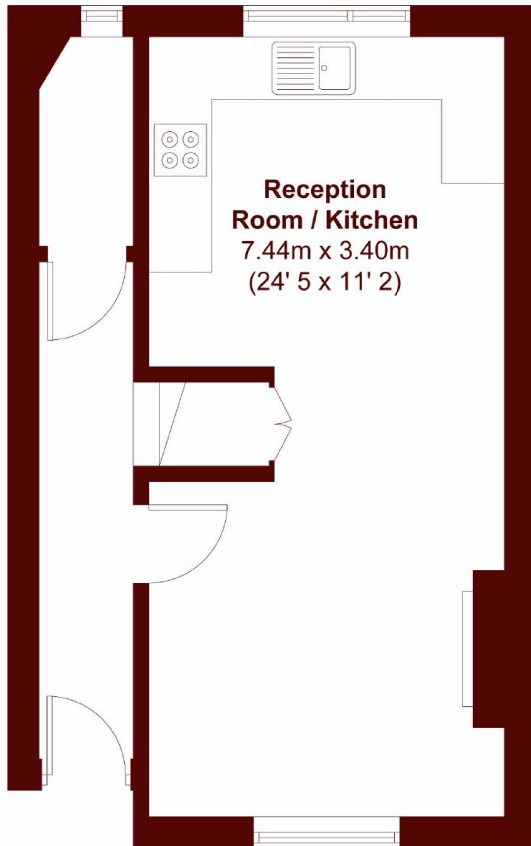
£625,000



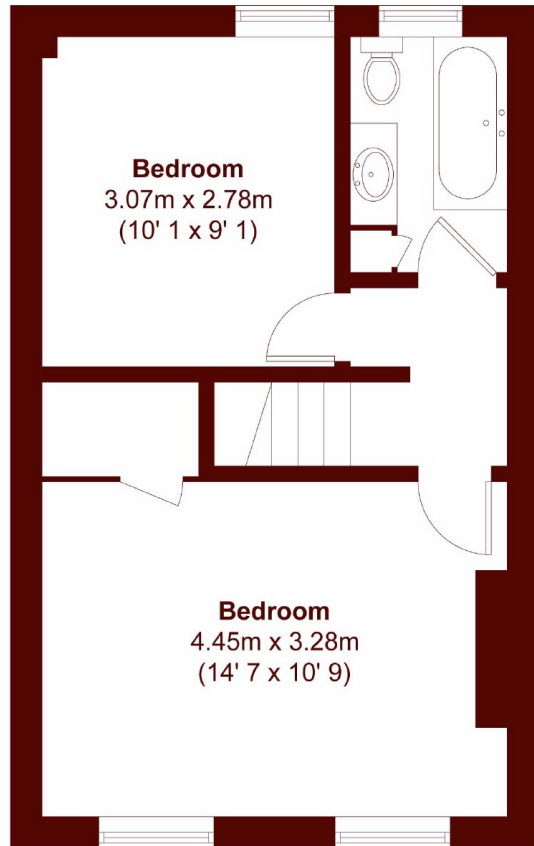
• Two Bedrooms

• Share of Freehold

• Split-level



Ground Floor



First Floor

APPROX. GROSS INTERNAL FLOOR AREA
708 SQFT / 65.8 SQM

Marsh & Parsons Chiswick

34-38 Turnham Green
Terrace, London, W4 1QP
020 8994 2556