



Saville Road, W4

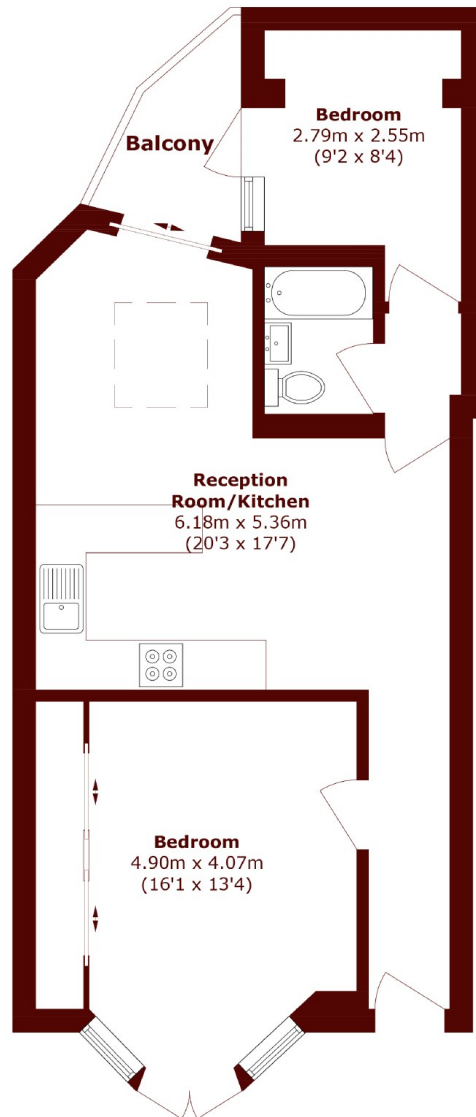
£725,000



• Great Transport Links

• Period Property

• Outstanding Condition



- Total area (approx.): 62.2 sq. m (669.5 sq. ft)
- Balcony area (approx.): 3.8 sq. m (40.9 sq. ft)

Marsh & Parsons Chiswick

34-38 Turnham Green
Terrace, London, W4 1QP
020 8994 2556