



## Old Brompton Road, SW5

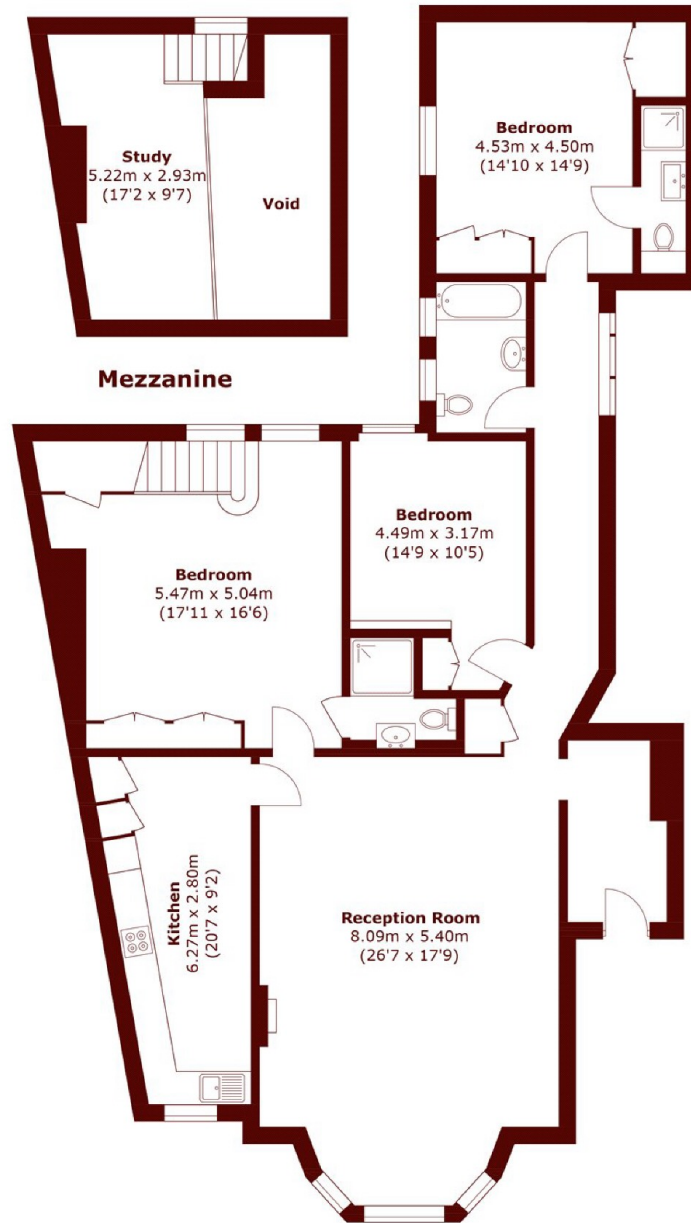
£1,900,000



- Three Bedrooms
- Two Bathrooms

- 1722 sqft
- High Ceilings

- Large Modern Kitchen
- Mezzanine



## Raised Ground Floor

Total area (approx.): 160.0 sq. m (1,722.2 sq. ft)  
(Including Mezzanine / Excluding Void)

### Marsh & Parsons Earls Court

246 Old Brompton Road,  
Earls Court, London, SW5  
020 7590 0800