

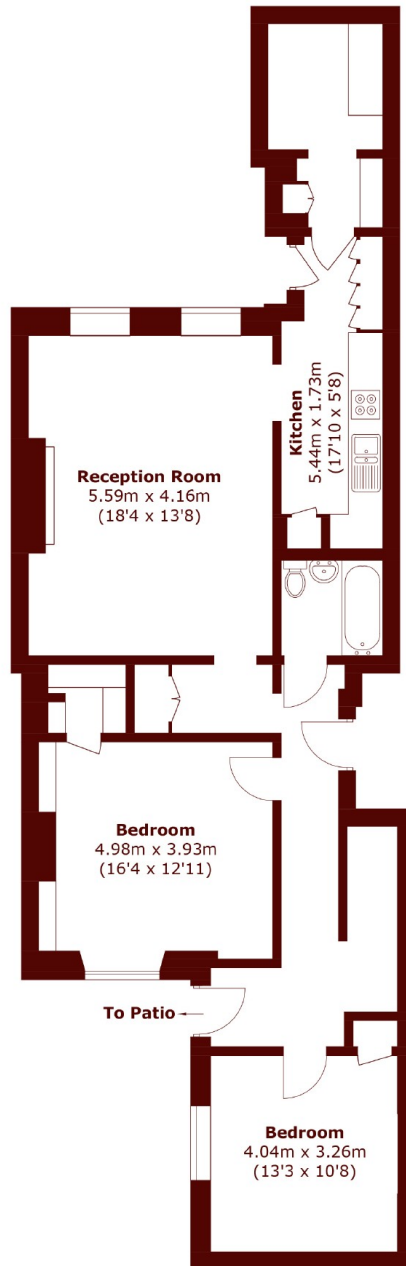


Nevern Square, SW5

£900,000



- Two Double Bedrooms
- South Facing Garden
- Excellent Condition
- Private Garden Square
- Share of Freehold
- Private Entrance



Total area (approx.): 90.9 sq. m (978.4 sq. ft)

Marsh & Parsons Earls Court

246 Old Brompton Road,
Earls Court, London, SW5
020 7590 0800